

2 simple ways to view and read MAC addresses on Windows 10 computers

The MAC address is the unique identifier or identifier of each device assigned by the manufacturer on each device. The MAC address is 48 bits long.

The MAC address is the unique identifier or identifier of each device assigned by the manufacturer on each device. The MAC address is 48 bits long.

Suppose for some reason, for example if you want to see and read the MAC address on your Windows 10 computer, but you do not know how to do it, refer to the following article of Network Administrator.

1. Method 1

Step 1:

Right-click the **Start** button in the bottom left corner of the screen, or alternatively press the **Windows + X** key combination to open the Power User Menu.

Step 2:

On the Power User Menu, click **Network Connections** .

Programs and Features

Mobility Center

Power Options

Event Viewer

System

Device Manager

Network Connections

Disk Management

Computer Management

Command Prompt

Command Prompt (Admin)

Task Manager

Control Panel

File Explorer

Search

Run

Shut down or sign out



Desktop

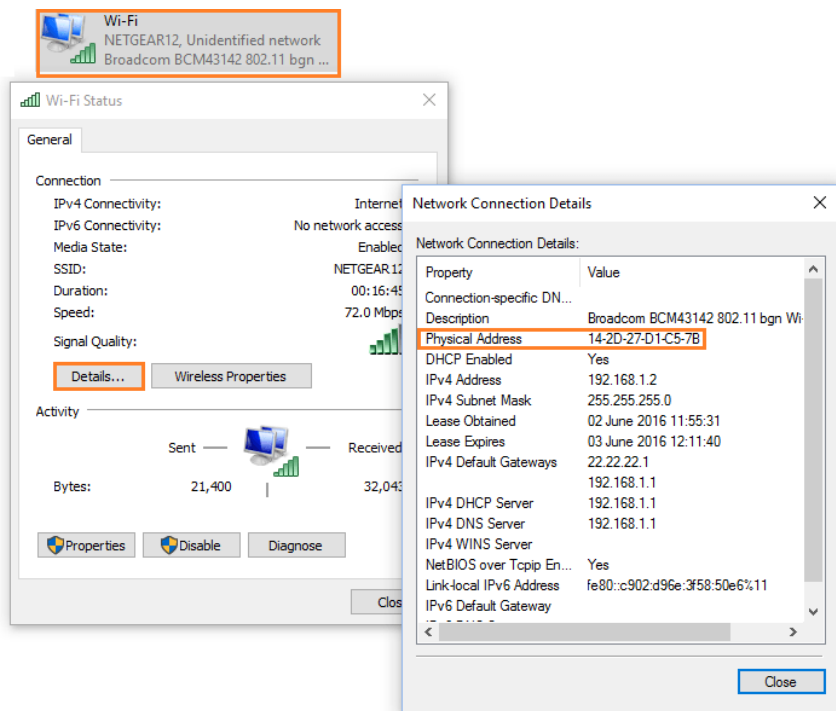
Step 3:

On the next window, double-click the Wifi Adapter or Ethernet Adapter icon, depending on the Internet connection you connect to.

Step 4:

Next click on **Details**.

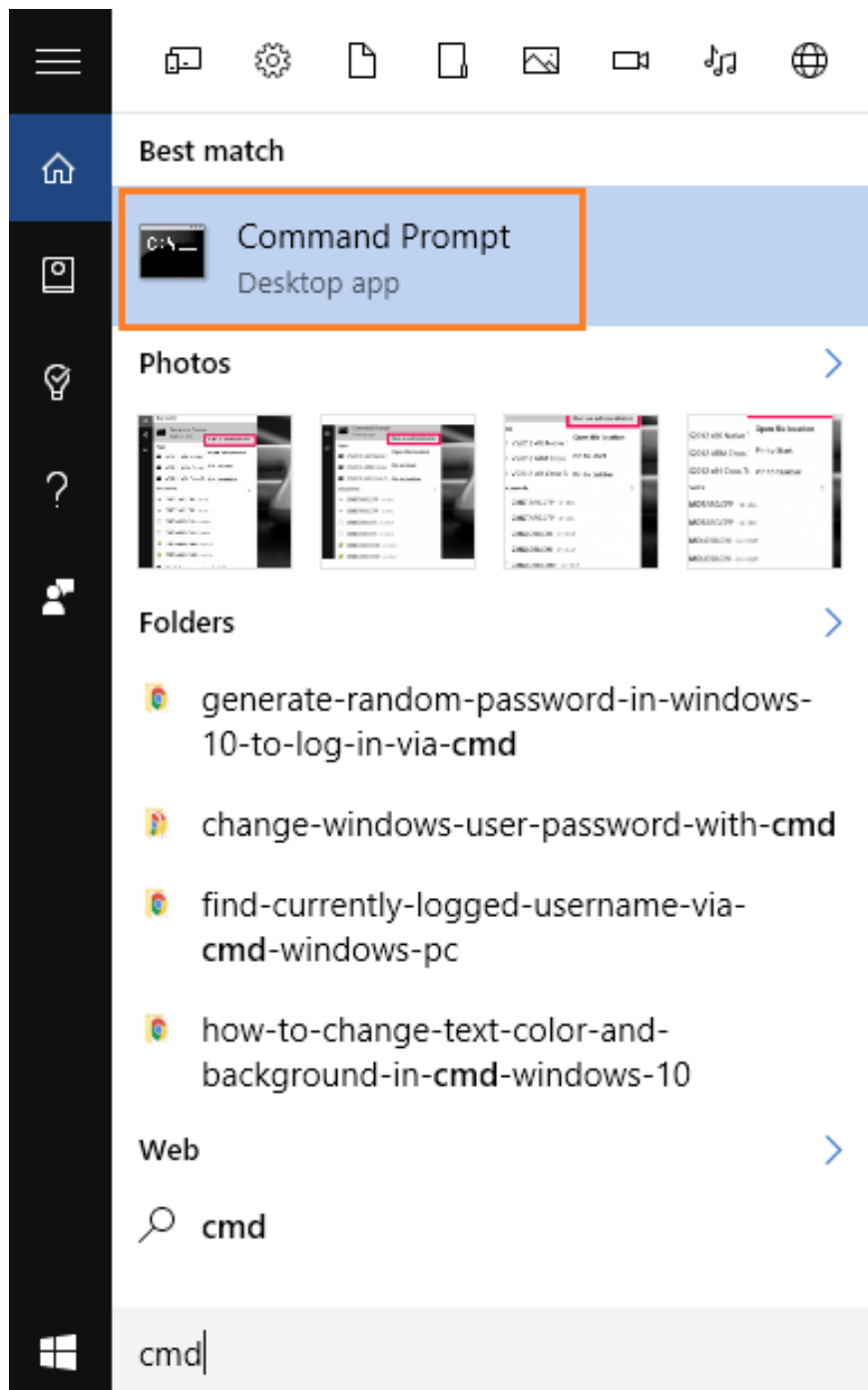
Here you will see the MAC address on your Windows 10 computer in the **Physical Address** section.



2. Another way

Step 1:

Enter **cmd** in the Search box on the Start Menu, on the search results list, click **Command Prompt** to open the Command Prompt window.



Step 2:

On the Command Prompt window, enter the command below and press **Enter**:

```
getmac / v / fo list
```

At this point you will be provided with information on the system. In the **Physical Address** section, you will see the MAC address on your Windows 10 computer.

```
Command Prompt
Microsoft Windows [Version 10.0.10586]
(c) 2015 Microsoft Corporation. All rights reserved.

C:\Users\hp>getmac /v /fo list

Connection Name: Ethernet
Network Adapter: Realtek PCIe FE Family Controller
Physical Address: Disabled
Transport Name: Disconnected

Connection Name: Wi-Fi
Network Adapter: Broadcom BCM43142 802.11 bgn Wi-Fi Adapter
Physical Address: 14-2D-27-D1-C5-7B
Transport Name: Media disconnected

Connection Name: Bluetooth Network Connection
Network Adapter: Bluetooth Device (Personal Area Network)
Physical Address: 14-2D-27-D1-C5-7C
Transport Name: Media disconnected
```

Refer to some of the following articles:

1. What is IP spoofing? And what is a denial of service (DoS) attack?
1. Conflict of IP address error when connecting to Wifi on iPhone, iPad, this is a fix
1. How to identify an unauthorized login IP address of your Facebook account

Good luck!

You finished reading the article "**2 simple ways to view and read MAC addresses on Windows 10 computers**" edited by the [TipsMake](#) team. We hope this article has provided you with many useful tech tips and tricks. You can search for similar articles on tips and guides. Thank you for reading and for following us regularly.