

2 Simple Ways To Check Laptop Battery Bottle At Home Simple

Instructions on how to check laptop battery life with software and without software are simple, detailed, done at home. Let's see now.

Laptop battery bottles are a common phenomenon, very common with high-frequency laptop users. However, how to check laptop battery life accurately, fastest at home? It can be checked in the usual way or using software. The following article, TipsMake will update the fastest and most accurate ways to check, please refer to it now!

I. Some signs and causes of laptop battery bottle

There are many signs that the laptop battery is dead. When there are some of the following signs, you need to check the laptop battery level, for example:

1. The device quickly drains the battery after fully charging.
2. Plug in the charger for a long time but the battery is not fully charged.
3. Battery life is not displayed correctly. The battery drains quickly and charges up abnormally fast.
4. The battery does not work, must be plugged in to charge the device to work.

The phenomenon of battery bottle bottle has many causes such as:

1. Due to the habit of opening the device while charging. This causes the charging and discharging process of the battery to take place at the same time, causing the battery to rapidly degrade.
2. Use laptop with high intensity, use it continuously without stopping.
3. The battery charging process is interrupted continuously due to unstable power supply.
4. Use until the device is powered down before plugging in the charger.
5. The heat dissipation function of the machine is damaged or too dusty, not cleaned to make the machine heat up quickly.
6. Using a laptop for many years also causes the battery to self-boil.

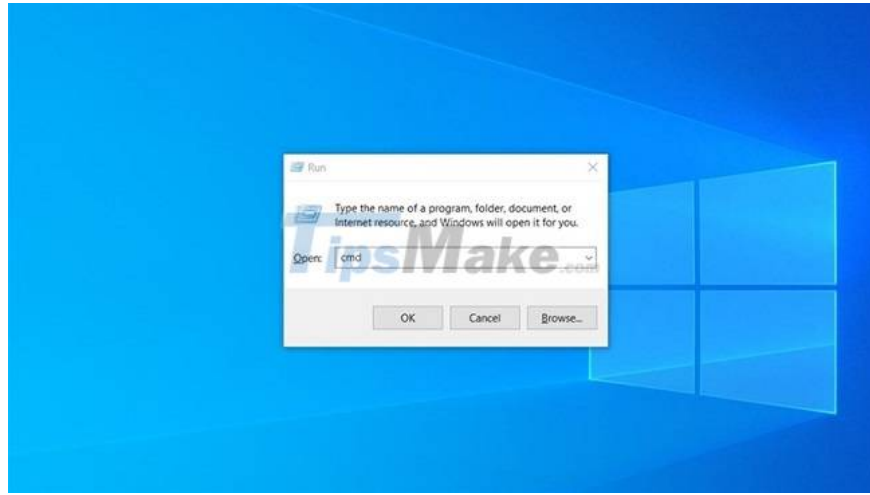
II. How to check laptop battery bottle simply and quickly

There are many simple ways to check laptop battery life that you can do yourself. Below, Tipsmake will guide in 2 ways: with software and without using software.

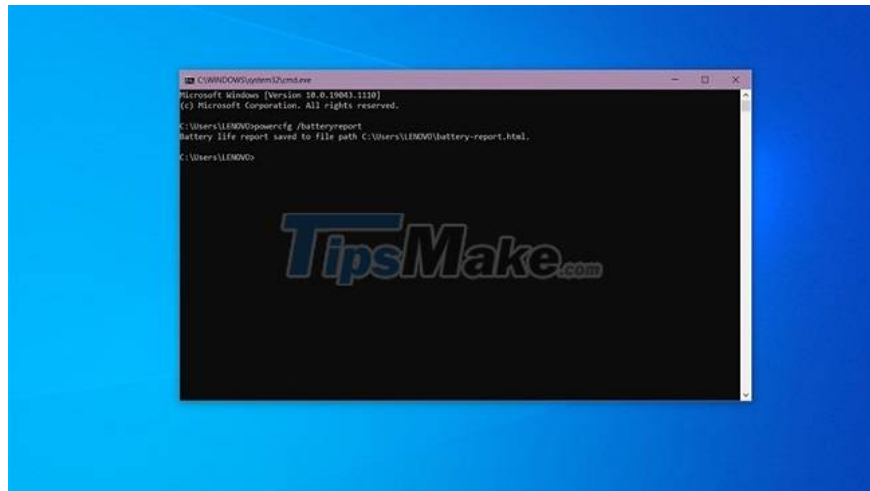
1. Check laptop battery life without software

If you are concerned that using software will cause viruses to enter your computer, you can check the battery life simply by using the Command Prompt tool available in Windows 10. The steps are as follows:

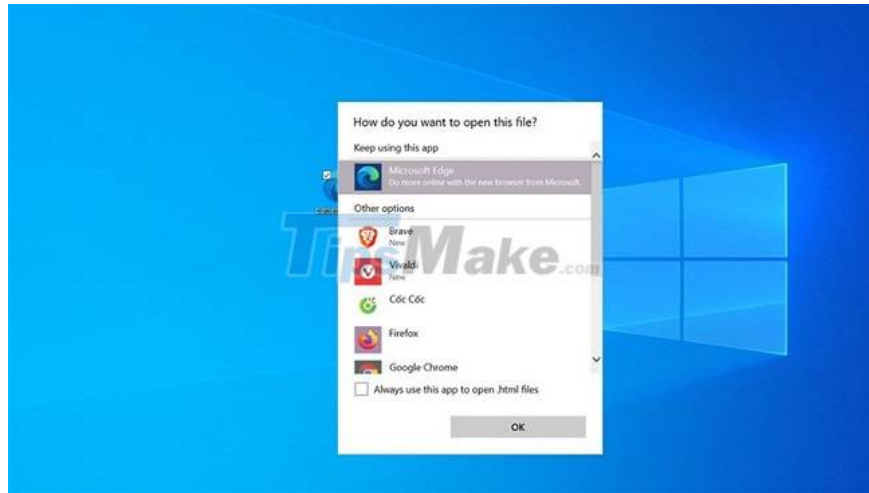
1. Press Windows + R key combination and Type cmd. Or search by cmd in taskbar.



1. Once you've opened the tool, type `powercfg /batteryreport`, then press the Enter key. At this point, a line will be displayed, Battery life report saved to C. That is, there is a detailed report file about the current status of the battery in the device.



1. You just need to access the correct path This PC => select Drive C => select User => select Account name => select and Find a File named: battery-report.html to extract the file. Then, drag it out of the screen to make it easier to see.
2. Double-click the file to open it and select the browser you want to use to open it.



1. After successfully opening, you scroll down to the second item. Monitor the battery status in 2 lines Design Capacity and Full Charge Capacity. If the difference is not over 10,000 mWh, it means that the bottle is light, and there is no need to change the battery. If the difference is larger, you need to replace the new battery to use.



Monitor the battery at 2 lines Design Capacity and Full Charge Capacity to see how much the difference is

2. Check the battery level by software

How to check laptop battery life using software can be applied to many versions of Windows. CPUID HWMonitor is the most used safety software to evaluate battery and CPU level. You do the following step by step:

1. Download and install CPUID HWMonitor software to your computer.
2. Open the software interface and scroll down, the position of Primary will come with information about the battery level. Design Capacity is the capacity of the machine proposed by the manufacturer, and Current Capacity is the actual battery capacity at the present time.
3. Wear Level is the ratio of the difference between these two capacities. If this ratio is below 50%, the device can still use the old battery. If the number exceeds 50%, you should replace the battery with a new one to ensure performance and safety when using.

Temperatures			
Air Flow	45 °C (113 °F)	44 °C (111 °F)	45 °C (113 °F)
Utilization			
Space (c:)	99 %	98 %	99 %
Space (d:)	37 %	37 %	37 %
Intel(R) HD Graphics 3000			
Temperatures			
GPU	68 °C (154 °F)	65 °C (149 °F)	82 °C (179 °F)
Clocks			
Graphics	648 MHz	628 MHz	650 MHz
Utilization			
GPU	0 %	0 %	41 %
Primary			
Voltages			
Current Voltage	11.376 V	11.221 V	11.529 V
Capacities			
Designed Capacity	37325 mWh	37325 mWh	37325 mWh
Full Charge Capacity	37325 mWh	37325 mWh	37325 mWh
Current Capacity	26957 mWh	26957 mWh	29722 mWh
Levels			
Wear Level	0 %	0 %	0 %
Charge Level	72 %	72 %	79 %
Hewlett-Packard 166D			

Ready

Above, you have been referred to 2 ways to check the laptop battery level by software and by tools on the laptop. Try checking immediately to see if your laptop battery is still working effectively so that you can replace and repair it in the most timely manner!

You finished reading the article "**2 Simple Ways To Check Laptop Battery Bottle At Home Simple**" edited by the [TipsMake](#) team. We hope this article has provided you with many useful tech tips and tricks. You can search for similar articles on tips and guides. Thank you for reading and for following us regularly.