

192.168.2.1 - Default IP address for some home network routers

192.168.2.1 is the default local area network IP address for some home broadband routers including most Belkin models and some models of Edimax, Siemens and SMC.

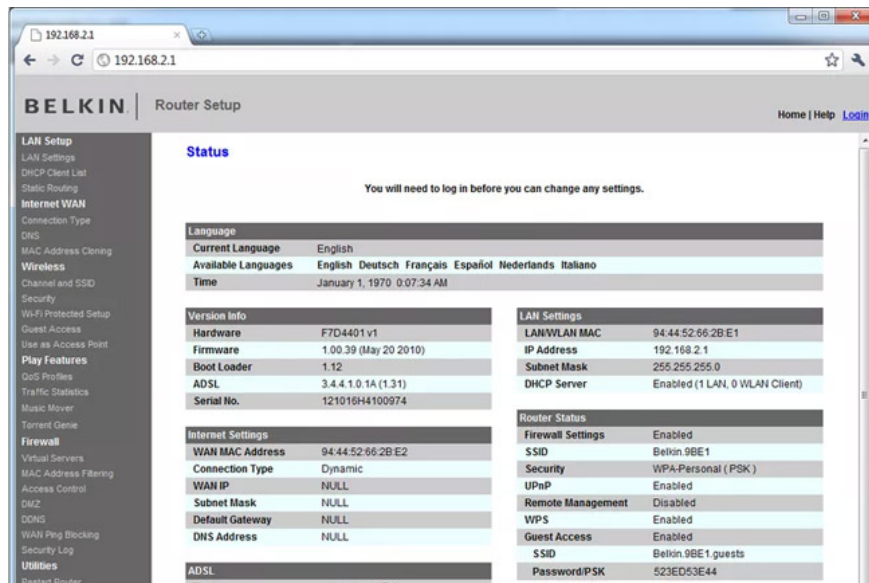
192.168.2.1 is the default local area network IP address for some home broadband routers including most Belkin models and some models of Edimax, Siemens and SMC. This IP address is placed on certain brands and models when sold for the first time, but any router or computer on the local network can be configured to use it.

All routers have an IP address that you can use to connect to the router's administrative control panel and configure the settings. You may never need to access these settings, since most home routers provide the same interface as the wizard that helps you perform the installation. However, if you have trouble installing the router or you want to perform some advanced configuration, you may need to access the router's console.

Use 192.168.2.1 to connect to the router

If the router uses 192.168.2.1, you can log into the router's control panel from the local network by entering the IP into the address bar of the web browser:

http://192.168.2.1/



After connecting, the home router prompts the user to enter an administrator username and password. This username / password combination is located at the factory for use on the first login and must be changed by the user to be more secure. Below are the most common default login credentials:

1. Belkin: User name: "admin" or left blank. Password: "admin", "password" or leave blank
2. Edimax: User name: "admin", "root" or blank. Password: "admin", "password", "1234", "epicrouter", "root", "conexant" or leave blank
3. Siemens: User name: "admin" or leave blank. Password: "admin", "user" or blank
4. SMC: User name: "admin", "smc", "smcadmin", "cusadmin" or leave blank. Password: "smcadmin", "root", "barricade", "password", "highspeed" or leave blank

Some Internet providers provide routers and other network devices for households as well as features that allow administrators to enter a 'friendly' name in a web browser instead of an IP address. For example, Belkin users can enter "" **http:// router** "instead.

Troubleshoot problems when logging in to the router's admin panel

If the browser responds with an error like " **This webpage is not available** ", the router will be offline (disconnected from the network) or cannot respond due to technical problems. Here are some actions you can take to reset the connection to your router:

1. Make sure the ethernet cable connects the router to your modem in good condition and is securely connected. For wireless routers, also check the cable that connects your device to the router itself.
2. Check the router's LED to make sure that the appropriate indicator light is on. For example, most routers display their connection status via an Internet LED, a wireless LED and a numbered LED to determine which port the computer is connected to. Compare them with the manufacturer's user guide to make sure all connections are valid.
3. Reset your connection:
 1. First, turn off the Internet modem and unplug its cable from the router.
 2. Next, turn off the router and other related computers or devices.
 3. After that, turn on the router and then the computer and try connecting to the router. At this point, the router has the opportunity to reset its IP as well as the device's IP.
 4. Finally, reconnect the router to the modem.

If you still have problems with the router and cannot connect to the administrative control panel, contact your router manufacturer.

1. Restart the router and modem properly?

Limit use of this address

Address 192.168.2.1 is an IPv4 Private network address, which means it cannot be used to connect to a router from outside the home network. (The router's public IP address must be used instead.)

To avoid IP address conflicts, only one device at a time on the local network can use 192.168.2.1. For example, a home network with two routers running simultaneously must be set up with different addresses.

Home users can also be confused when thinking that a router needs to use IP address 192.168.2.1 when it is configured to use a different address. To confirm the address that the local router is using, the administrator can look up the default port set on any device currently connected to that router.

Picture 2 of 192.168.2.1 - Default IP address for some home network routers

If you are using a Windows PC, you can quickly access the router's IP address (called "default port") by using the ipconfig command as follows:

1. Open **Command Prompt** .
2. Enter **ipconfig** to display a list of all computer connections. The router's IP address (assuming the computer is connected to the local network) is the "**Default Gateway** " in the **Local Area Connection section** .

Change this address

You can change the router's address if you want, as long as it is within the allowed range for Private IP addresses. Although 192.168.2.1 is a popular default address, changing it doesn't greatly improve the security of the home network.

Routers that do not use the default IP address can be restored to use the initial default values ??through a hard reset process. For more information, see the article Explaining rules 30-30-30 when hard reset the router and How to reset the WiFi router.

See more:

1. 192.168.1.2: Common router IP address
2. Find out IP Router address 192.168.1.254
3. Learn 193.168.0.1: IP address of broadband router

You finished reading the article "**192.168.2.1 - Default IP address for some home network routers**" edited by the [TipsMake](#) team. We hope this article has provided you with many useful tech tips and tricks. You can search for similar articles on tips and guides. Thank you for reading and for following us regularly.