

11 ways to start the Performance Monitor performance monitor in Windows

Performance Monitor is a sophisticated tool that can be used to monitor the performance of your Windows computer or device.

Performance Monitor is a sophisticated tool that can be used to monitor the performance of your Windows computer or device. Through the Performance Monitor, you can monitor and analyze and make judgments about how your computer manages resources on the system. Performance Monitor can display results in charts, graphics, or as numeric values. You can use these results to determine which components in the system need to be upgraded or replaced. You can refer to the article 'How to work with our Performance Monitor performance monitor in Windows' to get the information you need, and within the scope of this article, we will learn about each other. How to start the Performance Monitor performance monitor in Windows.

NOTE: These instructions are only applicable for Windows 10, Windows 7 and Windows 8.1. Some methods are applicable in all three versions of Windows, but others can only be used in one or two specific versions. For each method, we will mention the Windows version that it works. If you don't know what version of Windows you are using, read this guide: [4 simple ways to check your computer's hardware and laptop configuration and information](#)

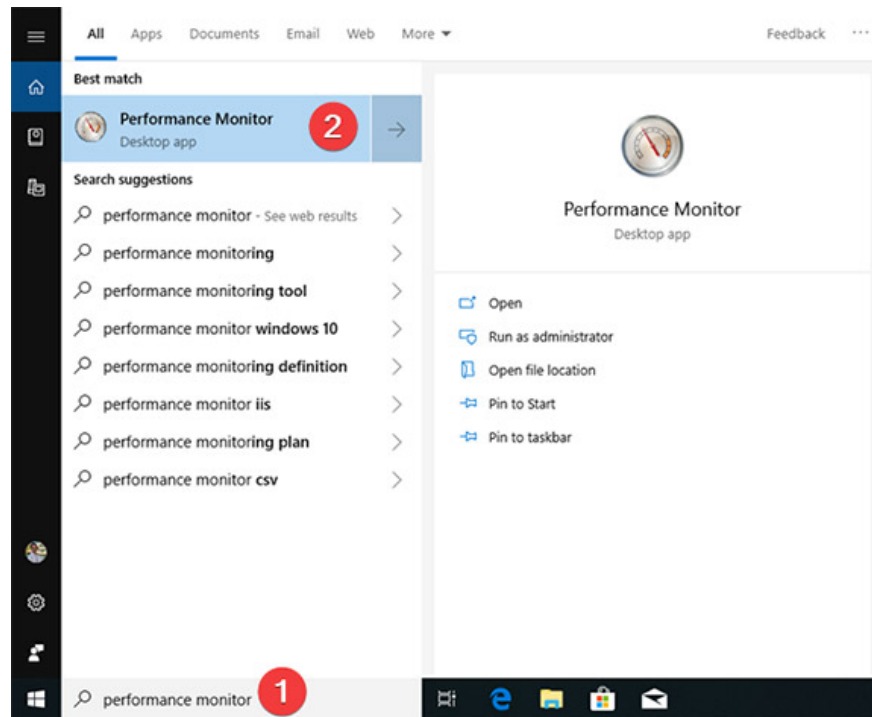
Start Performance Monitor

1. Launch Performance Monitor productivity using the search feature (applicable to all Windows versions)
2. Open Performance Monitor from the Start menu (applies only to Windows 10)
3. Open Performance Monitor using Cortana (Windows 10 only)
4. Pin Performance Monitor to the taskbar, Start menu (Windows 10 and Windows 7) or Start screen (applies to Windows 8.1)
5. Open Performance Monitor from System Configuration (applies to all Windows versions)
6. Launch Performance Monitor from Computer Management (applicable to all Windows versions)
7. Use the Run search window (applies to all Windows versions)
8. Launch Performance Monitor from Command Prompt or PowerShell (applies to all Windows versions)
9. Create a shortcut for Performance Monitor (applies to all Windows versions)
10. Open Performance Monitor using Windows Explorer (Windows 7) or File Explorer (Windows 8.1 and Windows 10)
11. Open Performance Monitor by running its executable file (applicable to all Windows versions)

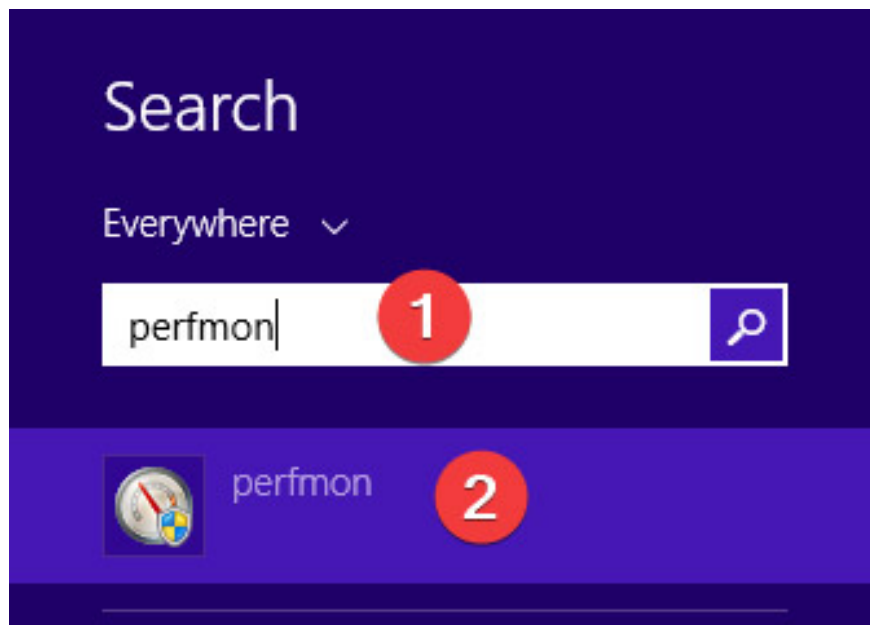
Start Performance Monitor using the search feature (applicable to all Windows versions)

One of the fastest ways to access anything in Windows is to use the system's search function.

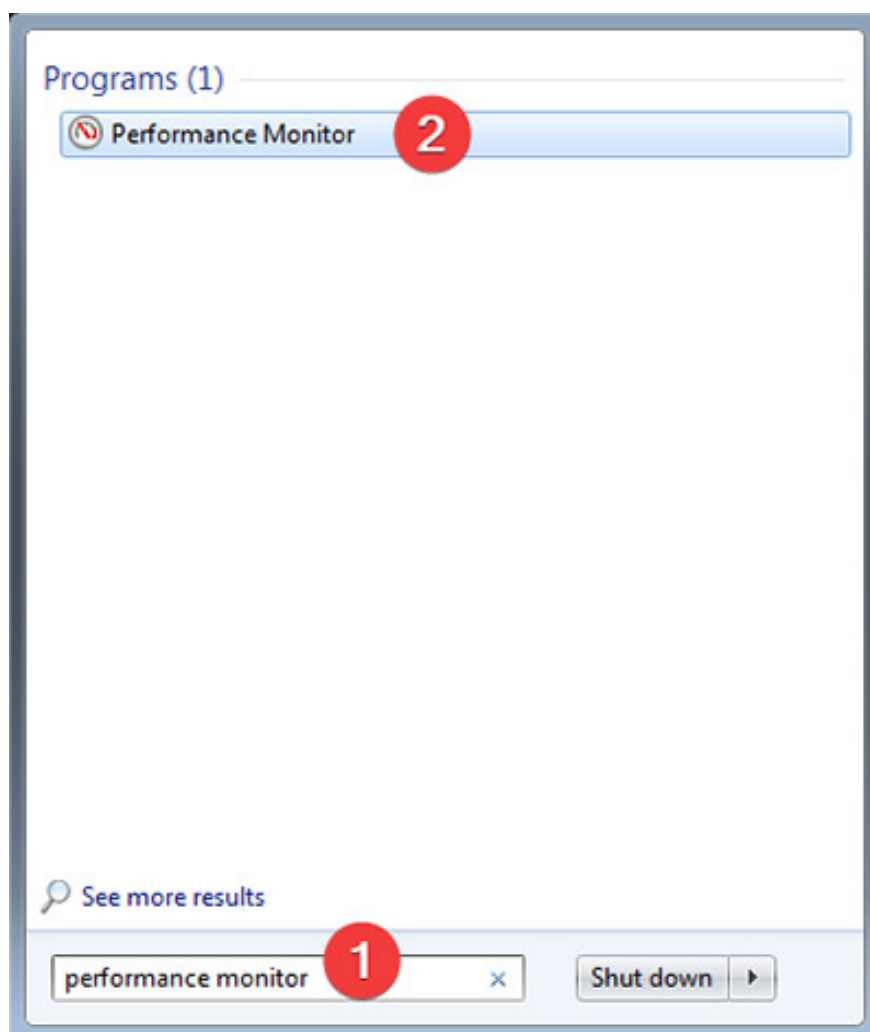
In Windows 10, simply click or click inside the search box on the taskbar (with the magnifying glass icon), then enter the keyword "Performance Monitor" or "perfmon" and click on the search results that appear. .



In Windows 8.1, switch to the Start screen and enter the keyword "Performance Monitor" or "perfmon". Before you enter the first word, the search results for the Performance Monitor are displayed. that result.

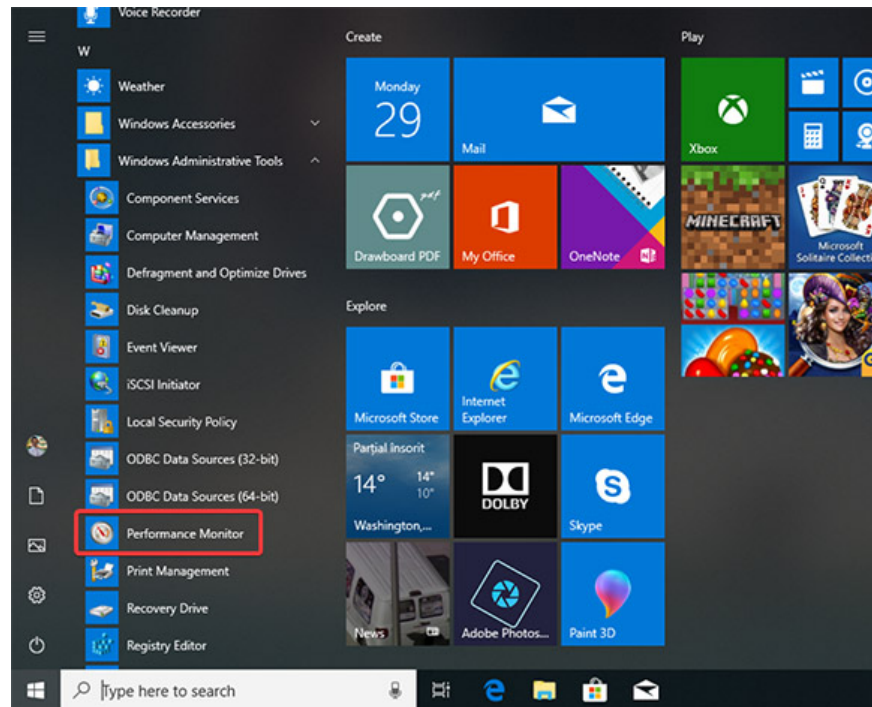


In Windows 7, you will have to open the Start Menu and enter the keyword "Performance Monitor" or "perfmon" in the search box, then click the **Performance Monitor shortcut** in the list of returned program results.



Open Performance Monitor from the Start menu (applies only to Windows 10)

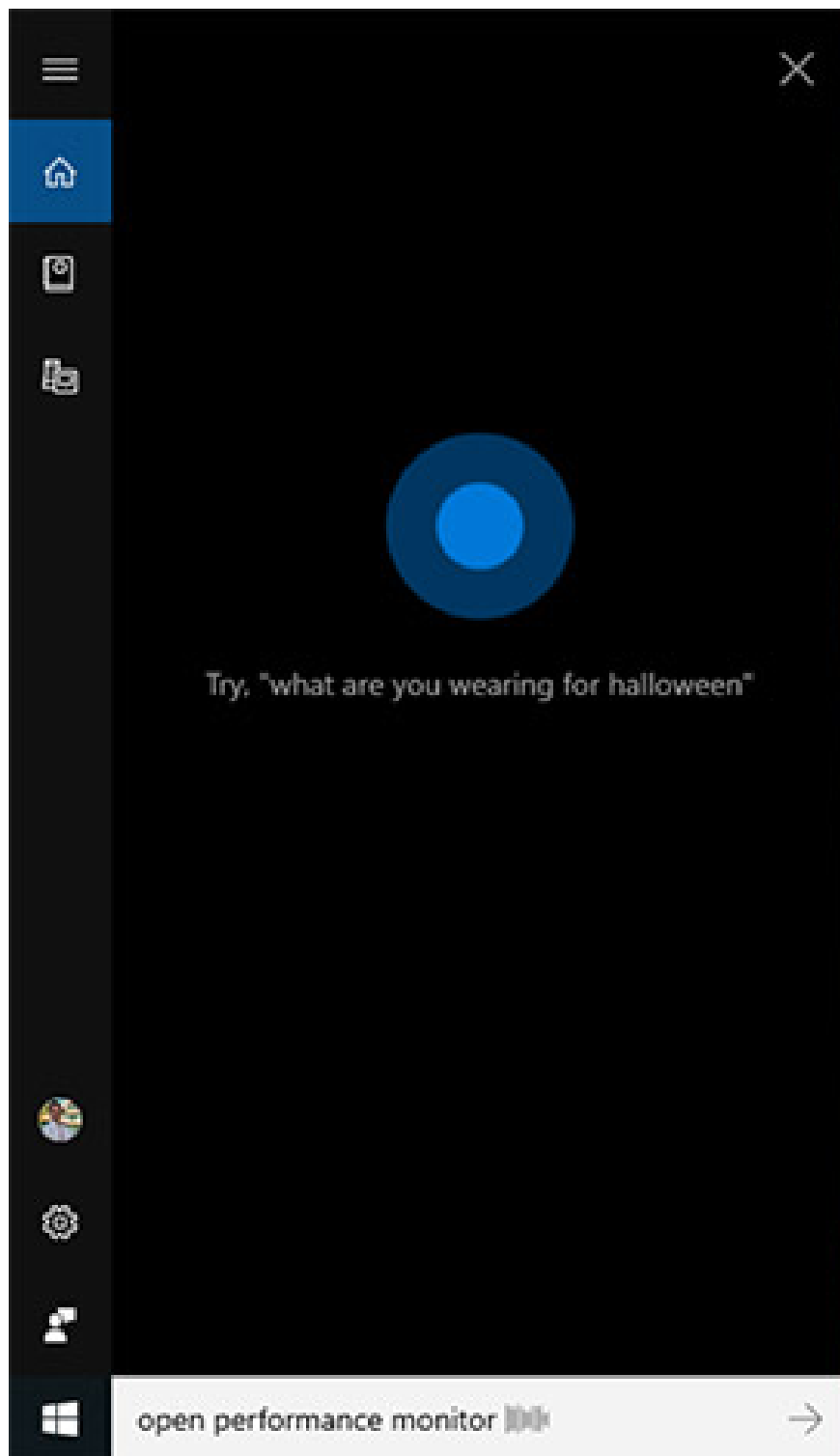
You can search and launch Performance Monitor in Windows 10 from the Start menu. First, click **Start** menu, scroll down to the application list and open the **Windows Administrative Tools** folder. Here, you will find the Performance Monitor shortcut.



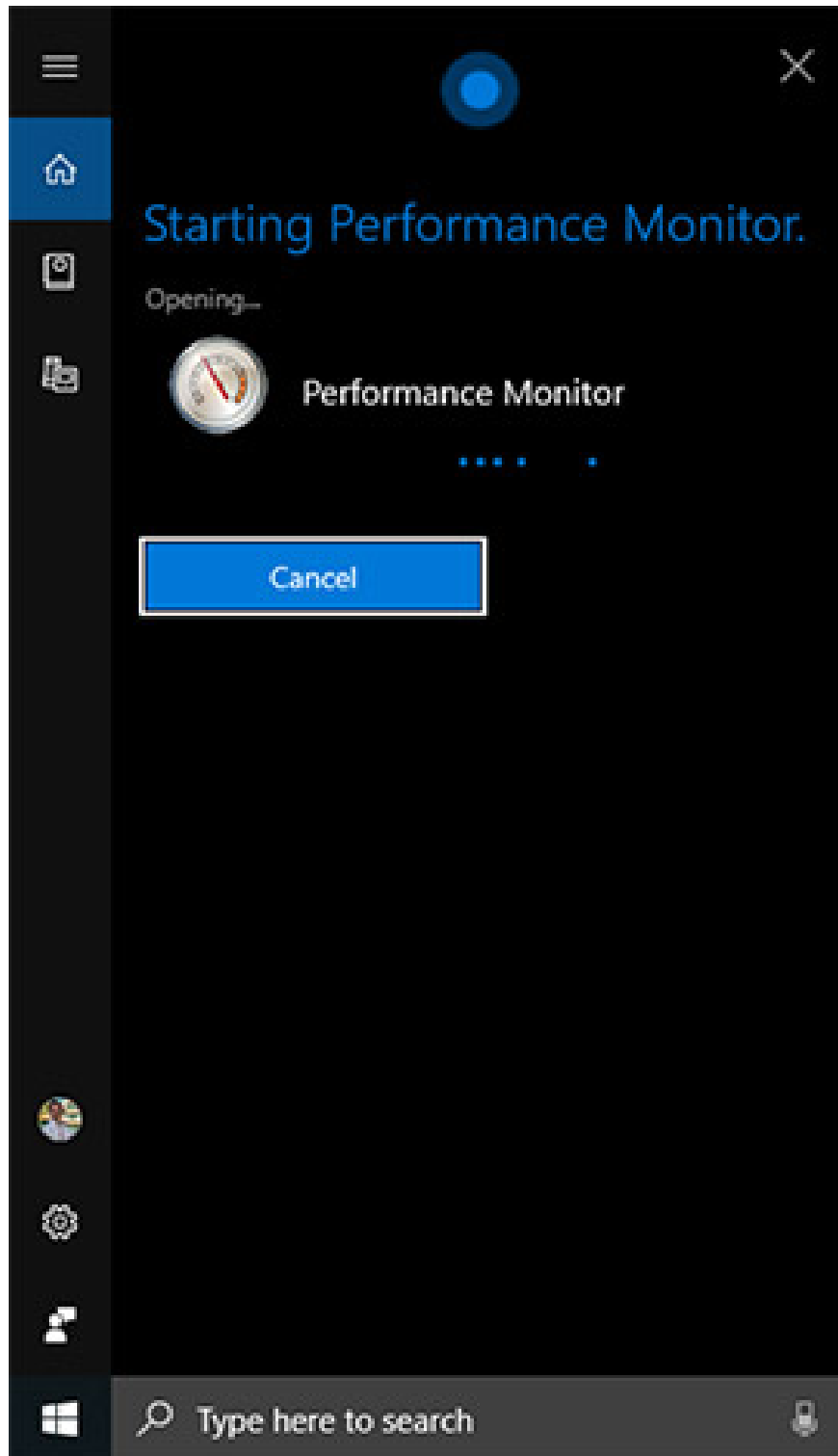
Open Performance Monitor using Cortana (Windows 10 only)

In Windows 10, you can talk and tell Cortana to open the Performance Monitor, how to proceed as follows:

On the taskbar, to the right of the search box, click or click the microphone icon to wake up the virtual assistant Cortana. Also, if Cortana is already enabled on the system, you just need to say "Hey Cortana" to wake up this virtual assistant girl, then talk to 'Open Performance Monitor'! Cortana will confirm your order as follows:



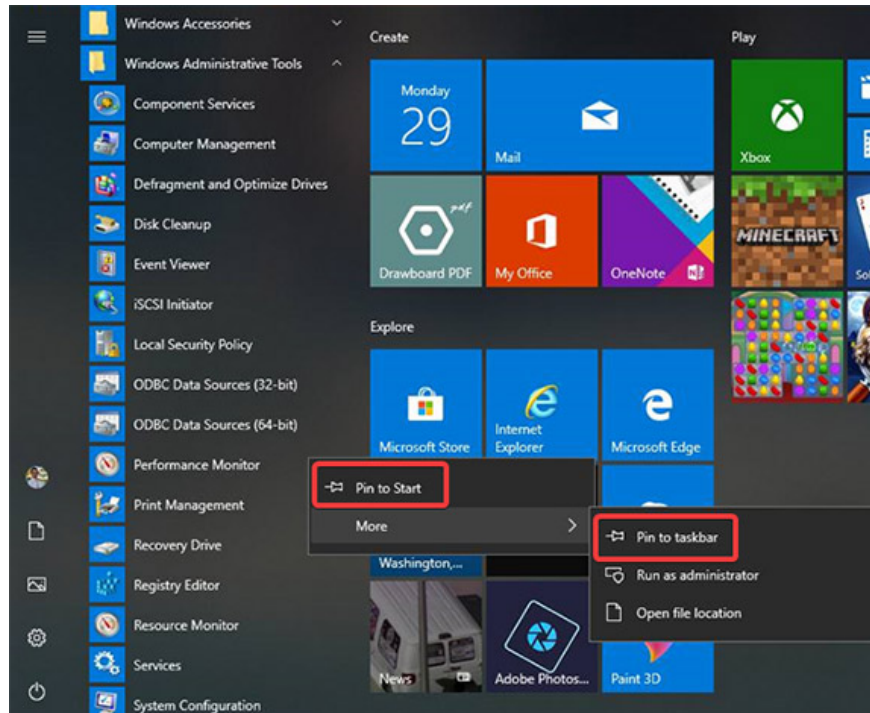
While executing the command, Cortana will display the "Starting Performance Monitor" message:



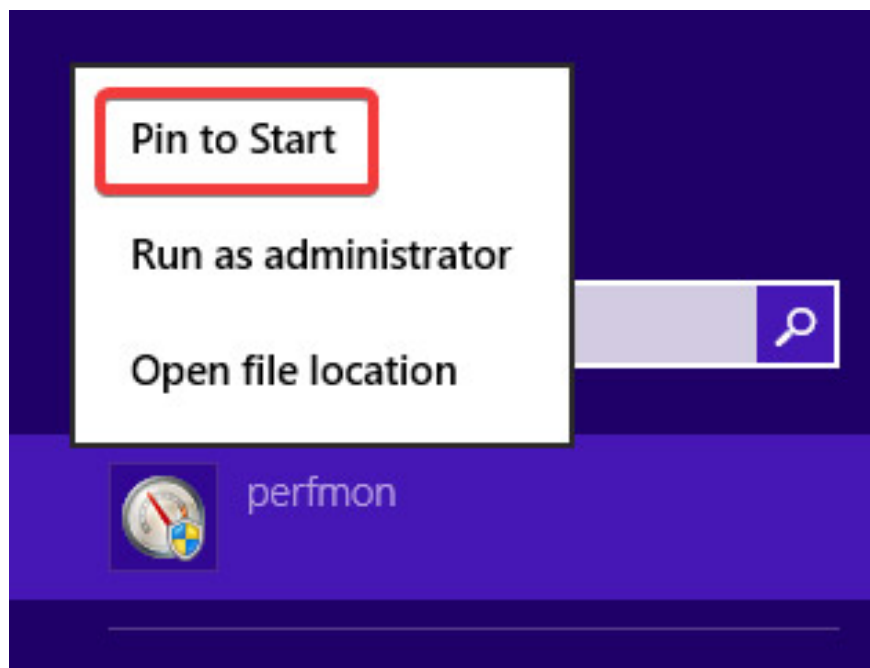
Pin Performance Monitor to the taskbar, Start menu (Windows 10 and Windows 7) or Start screen (applies to Windows 8.1)

If you often have to access the Performance Monitor, put it in conspicuous places for quick access. You can pin Performance Monitor to the taskbar and Start menu (Windows 10 and Windows 7) or Start Screen (Windows 8.1) for easy daily use.

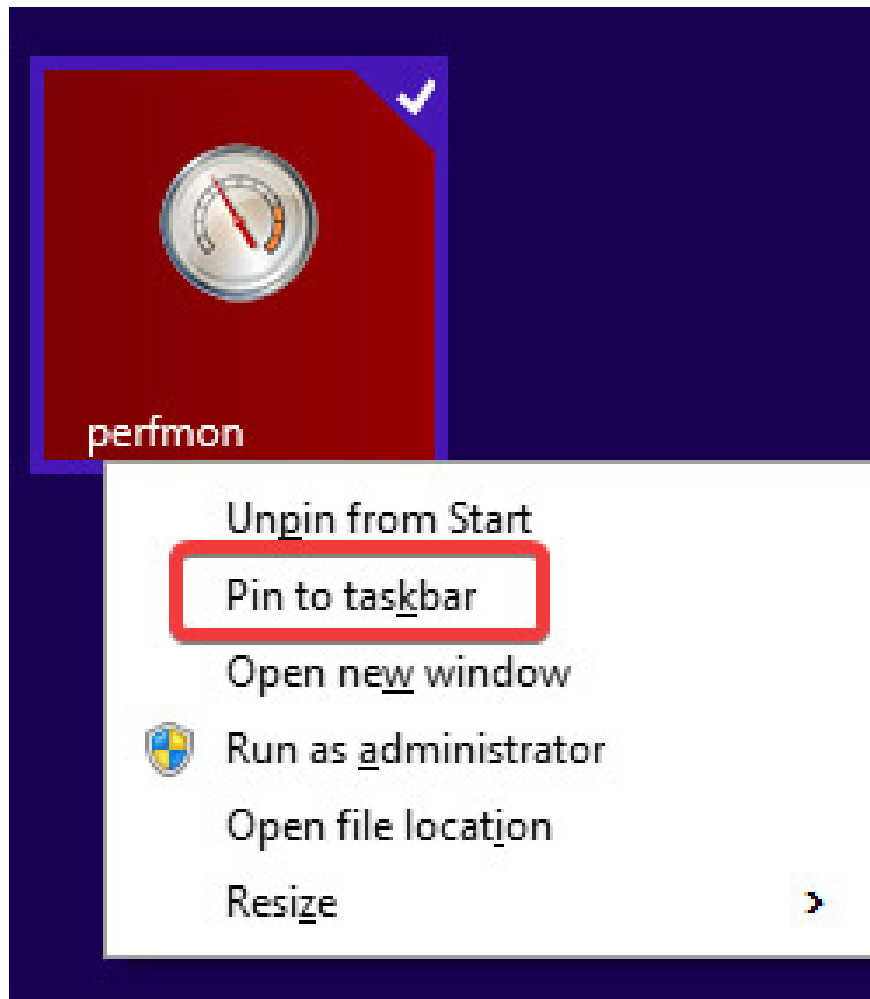
First, find **Performance Monitor** in the Start menu on Windows 10. Then right-click or click and hold the Performance Monitor shortcut. An options menu will appear, in this menu, you will see two **Pin to Start options** (for Start menu and More. In the **More** option, you will see another sub-option, **Pin to taskbar** (for task bar).



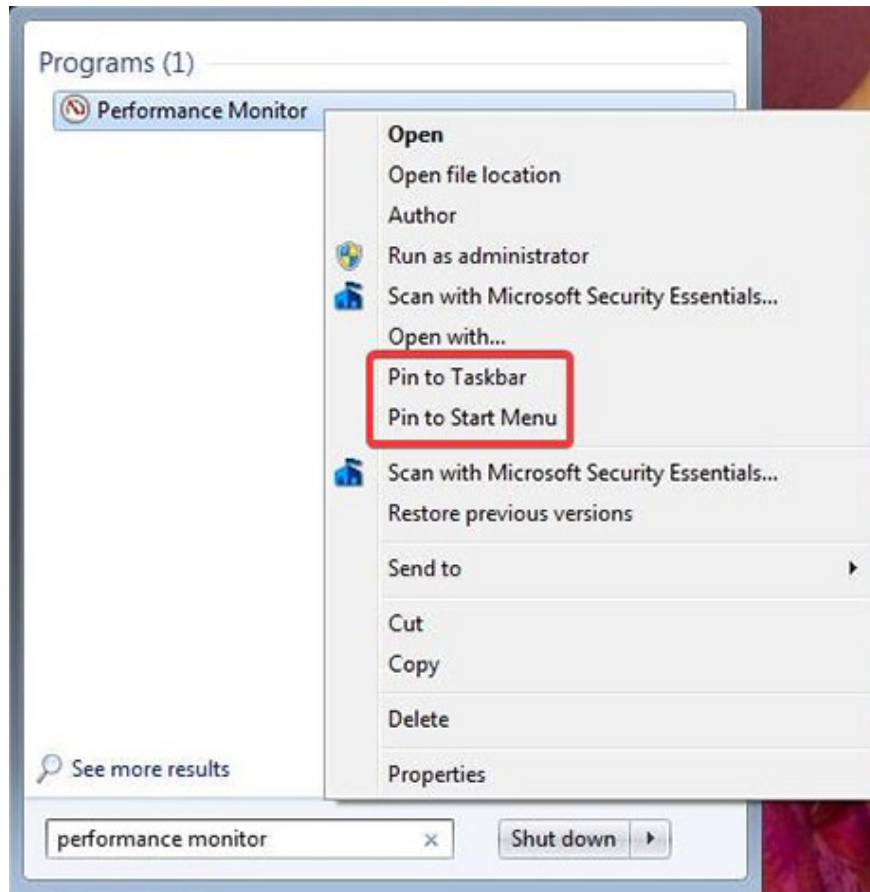
In Windows 8.1, you will also perform Performance Monitor search in the Start screen according to the method above. Then right-click or click and hold the shortcut of Performance Monitor (perfmon) and select **Pin to Start**.



To be able to pin Performance Monitor to the taskbar, right-click or click and hold the **Performance Monitor** box in the start screen, then another menu will appear. In this menu, select **Pin this program to taskbar** .

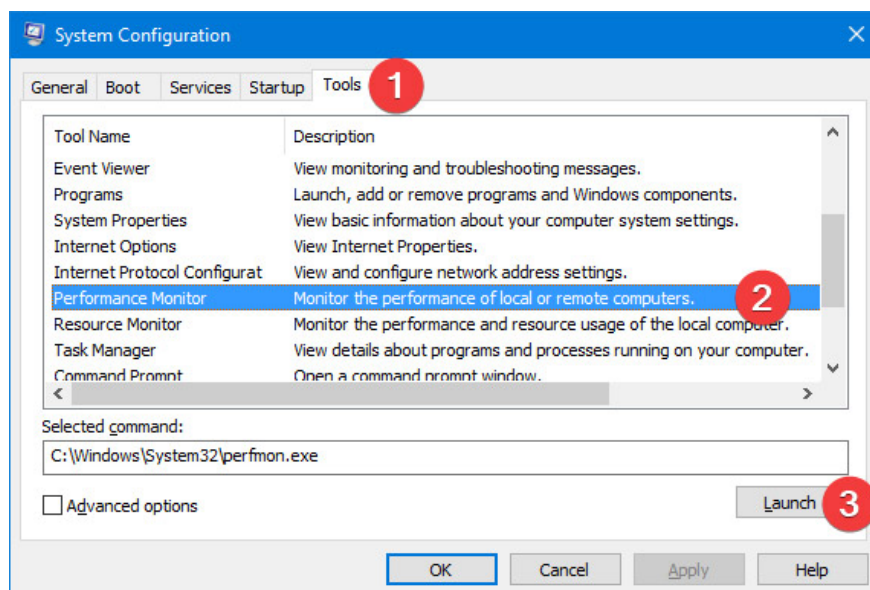


In Windows 7, open Start Menu and type "Performance Monitor" in the search field. Right-click or click and hold the **Performance Monitor** item in the returned result. A menu will appear, in this menu, click both **Pin to Start Menu** and **Pin to Taskbar** .



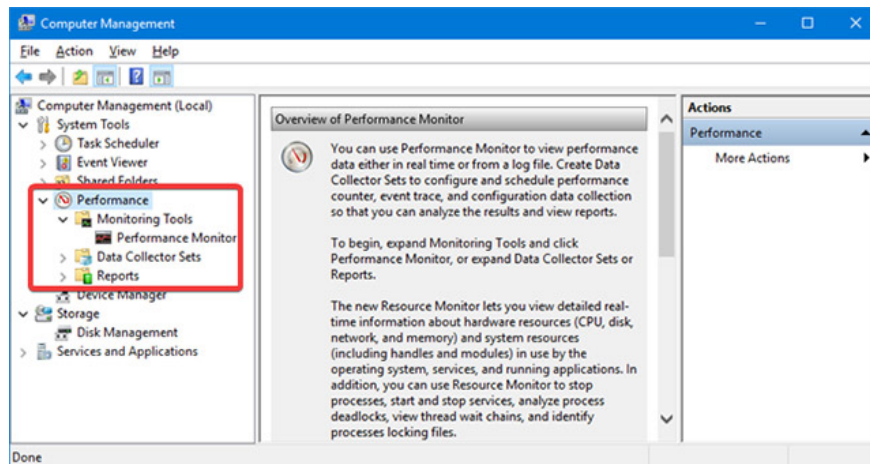
Open Performance Monitor from System Configuration (applies to all Windows versions)

You can also launch the Performance Monitor tool from System Configuration. First, navigate to the **Tools** tab in System Configuration. Next, select **Performance Monitor** and click **Launch**.



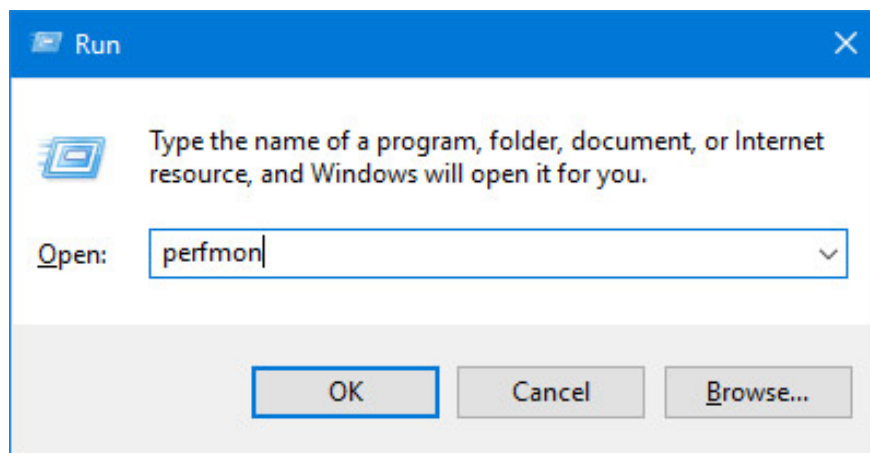
Launch Performance Monitor from Computer Management (applicable to all Windows versions)

The Performance Monitor performance monitor will be placed by Windows in the Computer Management section along with other components such as Event Viewer and Device Manager. You can find the Performance Monitor tool in the menu tree on the left side of the Computer Management window. Just click on the **Performance** section to access the Performance Monitor.



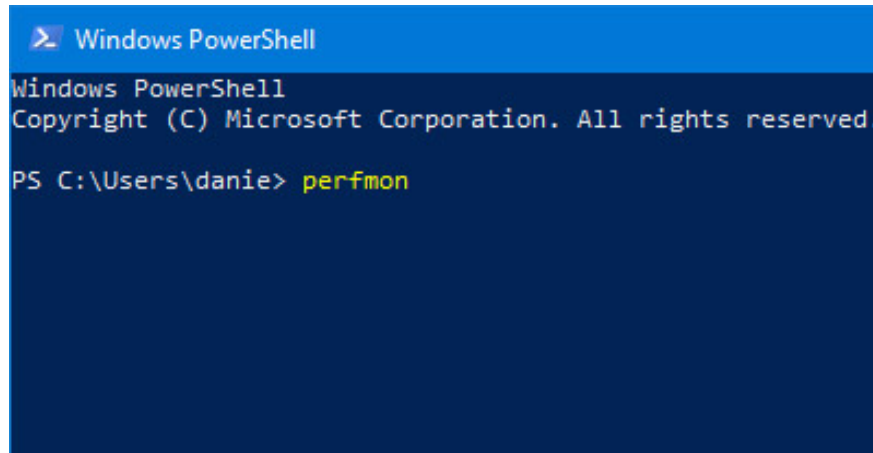
Use the Run search window (applies to all Windows versions)

First, press the Win + R key combination on the keyboard to open the Run window. Then enter **perfmon** in the search box and press Enter or click OK, Performance Monitor will automatically be launched.



Launch Performance Monitor from Command Prompt or PowerShell (applies to all Windows versions)

If you're used to using Command Prompt or PowerShell to work with tasks on your computer, you should know that the command to launch Performance Monitor is "perfmon". Very simply, first launch Command Prompt or PowerShell, then type this command and press the Enter key on the keyboard, Performance Monitor will immediately be launched.



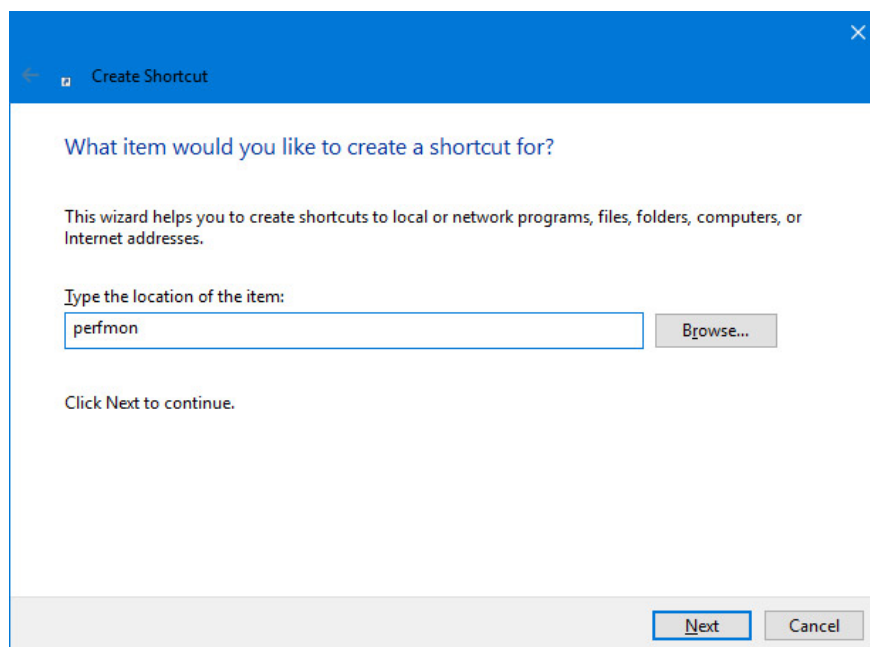
```
Windows PowerShell
Copyright (C) Microsoft Corporation. All rights reserved.

PS C:\Users\danie> perfmon
```

You can refer to the article 'Perfmon command in Windows' for more details

Create a shortcut for Performance Monitor (applies to all Windows versions)

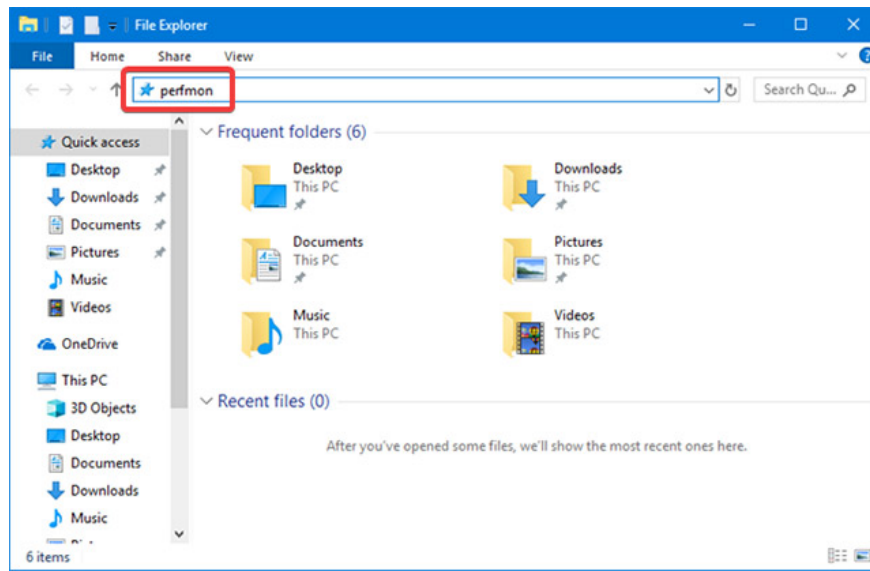
You can also create a shortcut for Performance Monitor and pin it on the desktop itself for easy access. You can refer to the articles "Shortcuts in Windows XP" and "Create and customize application shortcuts on Windows 10" to get a detailed idea of how to do this.



Open Performance Monitor using Windows Explorer (Windows 7) or File Explorer (Windows 8.1 and Windows 10)

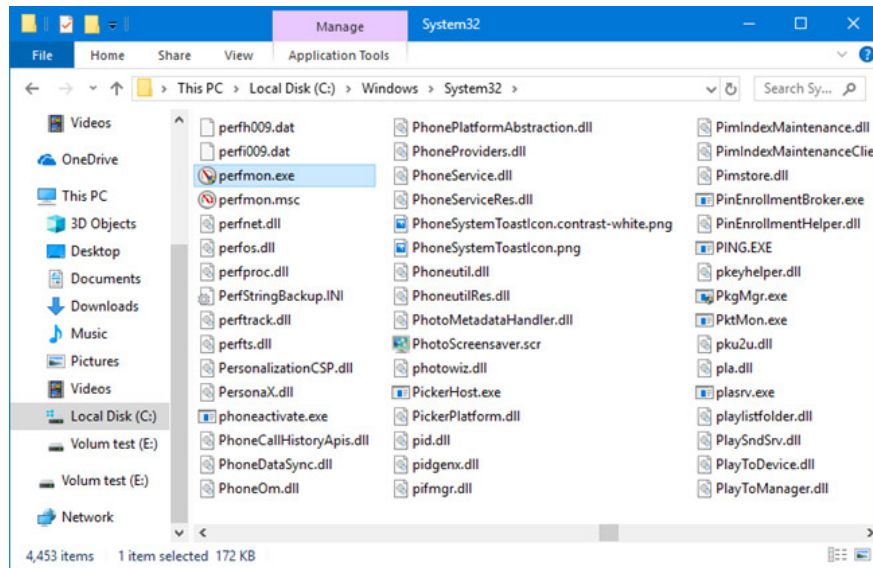
Windows Explorer in Windows 7 and File Explorer in Windows 8.1 and Windows 10 are very useful tools to open programs on Windows in general, not just the Performance Monitor.

First, go to Windows Explorer or File Explorer, enter the "perfmon" keyword in the address bar and press ENTER. Performance Monitor will be opened.



Open Performance Monitor by running its executable file (applicable to all Windows versions)

The executable file of Performance Monitor can be found in the WindowsSystem32 subdirectory. This file is named perfmon.exe, you only need to find and double-click the file and Performance Monitor will be launched.



NOTE: In the file list in the above illustration, you may notice there are two "perfmon" files. Both perfmon.exe and perfmon.msc files will launch the same application when you double-click them. Ignoring the technical details about how they are implemented, the only difference is the fact that the command line parameters will only work when you use perfmon.exe.

These are all simple to complex methods that can help us launch Performance Monitor in Windows versions. Hopefully this article will be helpful to you, and if you know of other methods, please share in the comment section below for us to update this article!

See more:

1. How to open Control Panel on Windows 10, 8, 7
2. 5 ways to quickly launch programs on Windows
3. How to add a startup program with the system?
4. 4 simple ways to check the configuration and hardware information of computers and laptops

You finished reading the article "**11 ways to start the Performance Monitor performance monitor in Windows**" edited by the [TipsMake](#) team. We hope this article has provided you with many useful tech tips and tricks. You can search for similar articles on tips and guides. Thank you for reading and for following us regularly.