

11 strange 'phenomena' of Windows

All computer users know that no operating system is perfect in every way, and Microsoft Windows is a good example. The truth is that the number of Windows errors is always more than other operating systems.

All computer users know that no operating system is perfect in every way, and Microsoft Windows is a good example. The truth is that the number of Windows errors is always more than other operating systems. This article will list the 11 most typical and typical errors of Windows.

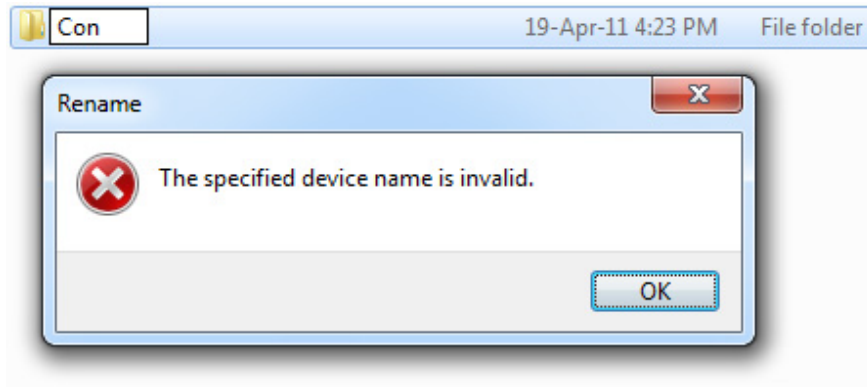
Strange "Phenomenon" of Windows

1. On Windows 7 to Windows 10
 1. 1. Set and change the folder name:
 2. 2. Advanced calculations:
 3. 3. God Mode
 4. 4. Watch Star Wars on CMD
 5. 5. Slide to turn off the computer
 6. 6. Phone dialer
 7. 7. The Number of the Beast (The number of the Beast)
 8. 8. Exit Explorer option
 9. 9. Hidden features of Microsoft Word
2. On Windows XP
 1. 10. Error of Notepad
 2. 11. Error of Solitaire game

On Windows 7 to Windows 10

1. Set and change the folder name:

First, when we try to name or change any folder to **CON** , Windows will display the following message:



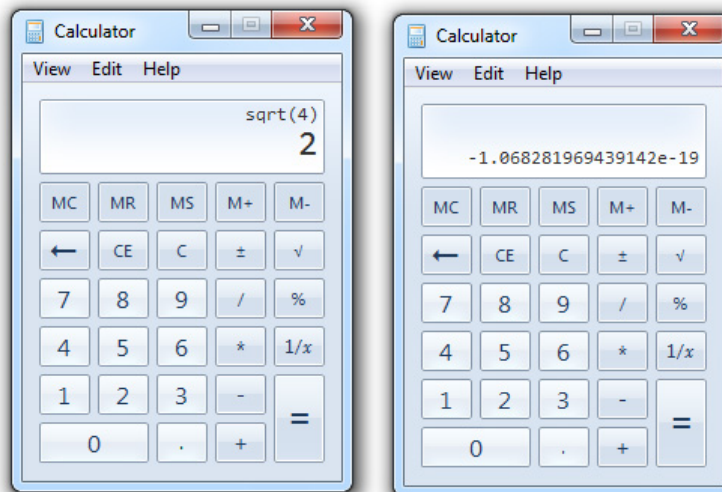
The same situation will occur with the following names: **PRN, LPT1, LPT2, (,), LPT9, NUL, COM1, (,), COM9, and CLOCK \$**. All of these involve hardware devices on the computer, and are not allowed to name files and folders, regardless of the extension. This is essentially a 'sequelae' from DOS, and exists through all versions of Windows (until the latest version is Windows 7).

2. Advanced calculations:

To illustrate, let's try doing some basic and advanced calculations.

For example: what is the square root of 4? 2 minus 2 equals?

Too simple, and next is a more complex calculation with Windows calculator. Take the square root of 4, then subtract 2. The result will be:



When executing on different Windows versions, the results are also different? Why is that? Until now, there is no exact answer to this question.

This error has occurred since Windows was born. Program-based calculation limits the accuracy of advanced calculations up to 32 digits. This means a complex calculation, such as a square root, that gives an approximate result. For example, the computer calculates the square root of two with 1,99999 . (with 32 digits 9). This multi-digit number (that's its real name) can lead to minor errors like what we saw above.

3. God Mode

This hidden Windows feature was first introduced on Windows Vista and is still one of the useful features. God Mode, also known as Windows Master Control Panel, opens all Control Panel options in a single folder. If you use Control Panel regularly, you will definitely like this trick.

1. Activate "God Mode" on Windows 10, 8 and 7

To enable God Mode, create a new folder and use the string below.

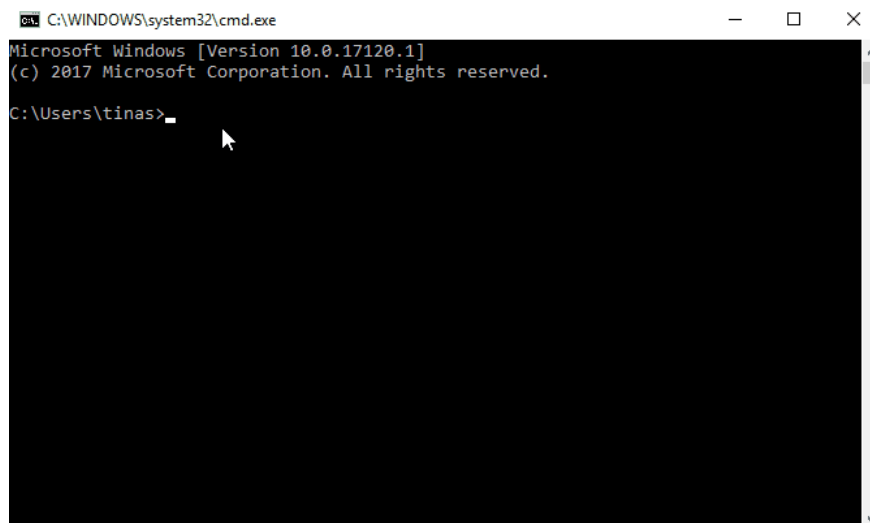
GodMode. {ED7BA470-8E54-465E-825C-99712043E01C}

Now, your Control Panel is ready to use.

1. Instructions for using Windows Control Panel effectively

Note : You can replace the word "GodMode" with a preferred term.

4. Watch Star Wars on CMD



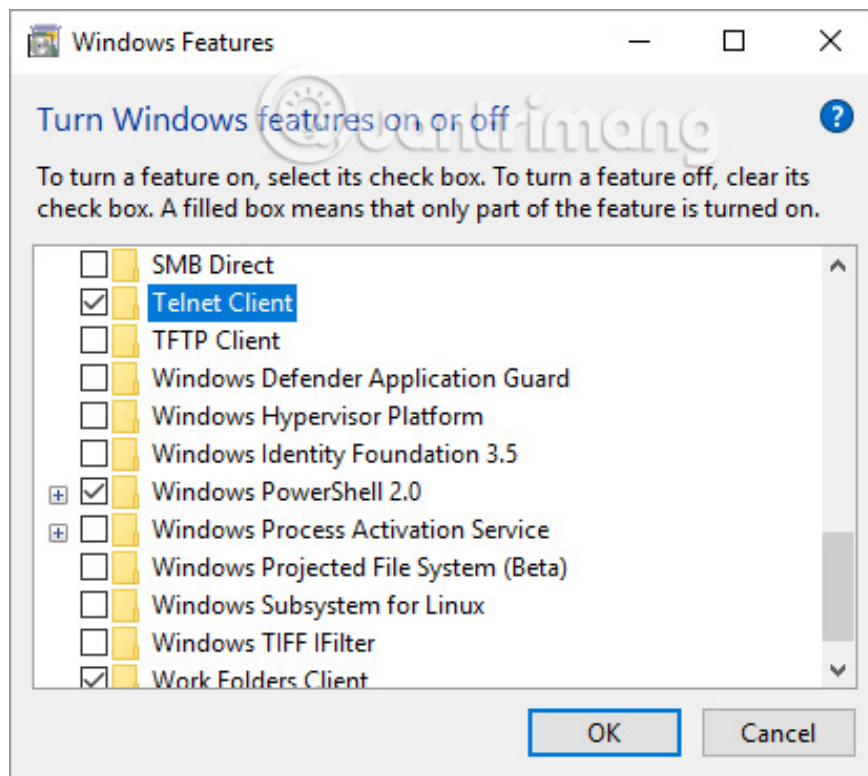
```
C:\WINDOWS\system32\cmd.exe
Microsoft Windows [Version 10.0.17120.1]
(c) 2017 Microsoft Corporation. All rights reserved.

C:\Users\tinas> telnet
```

Star Wars's Code CMD is one of the best Command Prompt. It works on all operating systems that support Telnet and has a terminal or command line window, even in Windows 10. Before using this command, you must enable Telnet.

1. Instructions for activating TFTP and Telnet Client on Windows 10

In Windows 10, press **Windows + Q** , enter **telnet** and select **Turn Windows features on or off from the results** . Scroll down to find and **tick** the **Telnet Client** box, then click **OK** . After waiting for Windows to complete the required changes, click **Close** .



Press **Windows + R** to launch the **Run** menu, type **cmd** and press **Enter** to open the command window. Now run the following command:

```
telnet towel.blinkenlights.nl
```

And now enjoy Star Wars with ASCII characters.

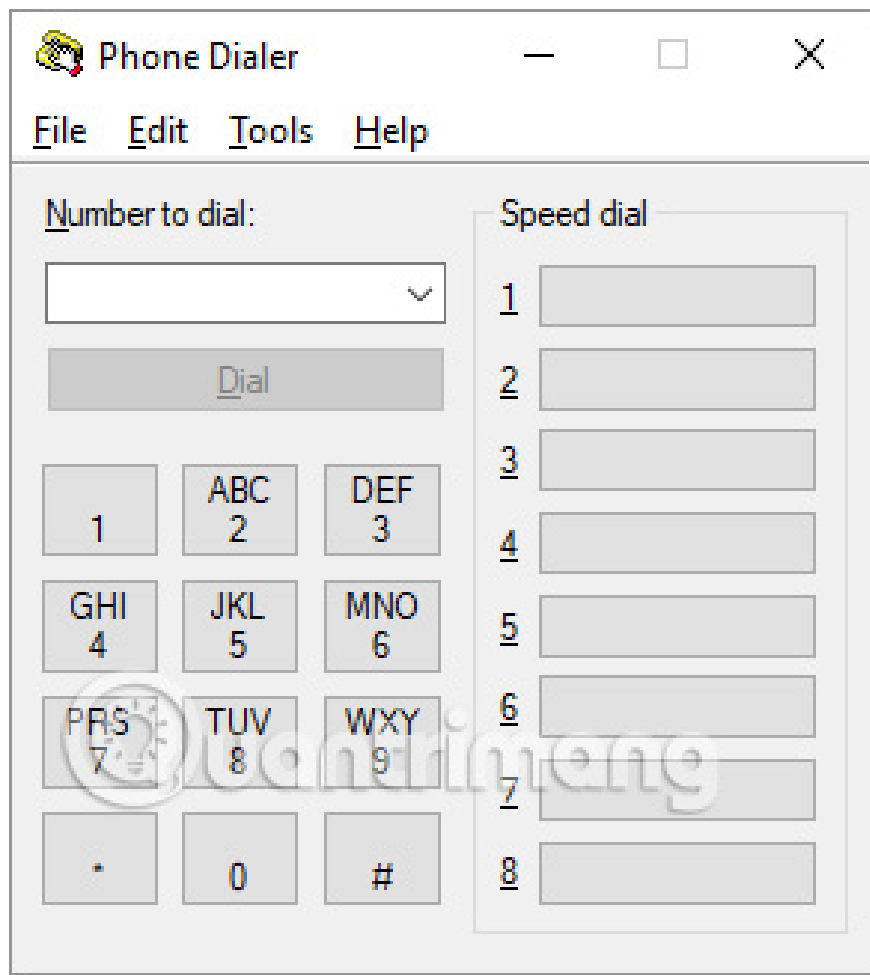
5. Slide to turn off the computer

Microsoft hid an EXE file called **SlideToShutDown** in the **C: WindowsSystem32** folder. This is another way to turn off Windows, it was first introduced in Windows Phone and then switched to Windows 8.

1. What is System32 directory and why should you not delete it?

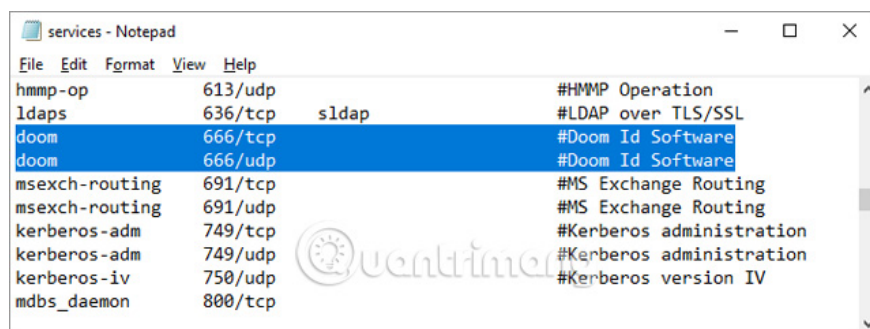
When in tablet mode, try pressing the power button for 3 to 5 seconds and **SlideToShutDown** will start automatically. If you're using Windows on a desktop computer, create a shortcut to launch the shutdown option.

6. Phone dialer



Since Windows 95, Windows contains a dialer application that allows you to make calls through the computer's phone port (if available). The only way to launch this utility is to press the **Windows + R** key, enter **dialer.exe** and click **OK**.

7. The Number of the Beast (The number of the Beast)



Doom 95 is the first Windows version of the Doom game. The game uses port 666, mentioned in The Number of the Beast. And port 666 is still reserved for doom to this day.

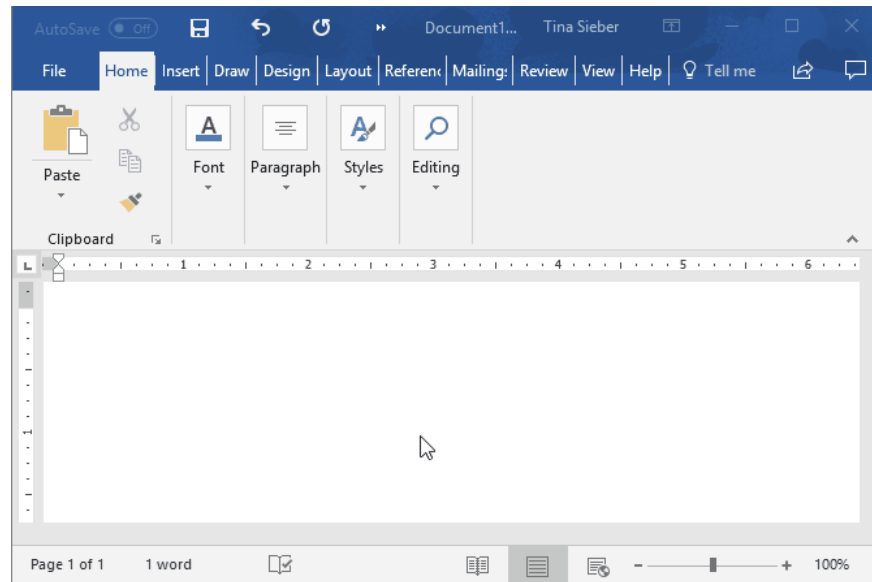
To see this number go to **C: WindowsSystem32driversetc** and open the file named **services** in Notepad.

8. Exit Explorer option

Context menu Windows 10 Taskbar contains a hidden option called Exit Explorer.

Hold **Ctrl + Shift** while right-clicking on the blank space on the Taskbar. (If you're running Windows 7 or a lower version, try right-clicking on the **Start Menu** while pressing **Ctrl + Shift**). In Windows 10, you will see the **Exit Explorer** option is the last item in the Taskbar context menu. This option allows you to turn off Windows File Explorer without having to access Task Manager.

9. Hidden features of Microsoft Word



This is not a bug, but a unique feature hidden by Microsoft Word. Open Word and type the following: = **rand (5,10)**

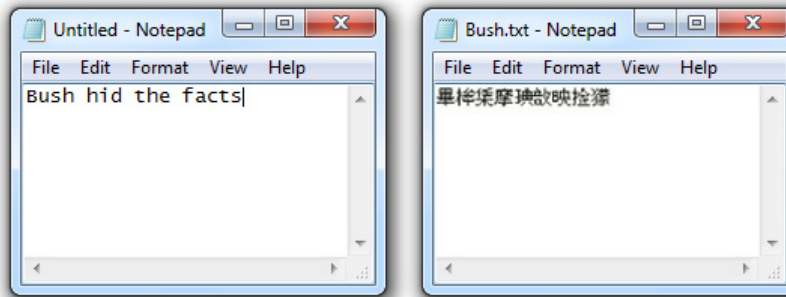
Microsoft Word will create 5 paragraphs of text with 10 lines. Depending on the number in the command, you can make it appear with many different paragraphs. Try = **rand (1,1)** to display only a single sentence. This trick is also called = **rand (200.99)** .

The text will change, depending on the version of Office and the main system language. In Microsoft Word 97 to 2003 with English as the main language, you will see the sentence "The quick brown fox jumps over the lazy dog," containing all the letters in the alphabet. From Office 2007, the default text was taken from a Word tutorial and also changed from Word 2013 to Word 2016. To review the sentence that appears in Word 97 to 2003 on Word 2007, 2010, and 2013, type = **rand .old ()** and press **Enter** .

On Windows XP

10. Error of Notepad

In fact, this error only exists on Notepad from Windows XP and earlier versions. Specifically, open Notepad and type: **Bush hid the facts** . Save, close Notepad and then open it again:



In Windows XP, we will see strange Unicode characters or like Chinese (pictured above). Technically, this is due to the **IsTextUnicode** function of Windows. When a text file encoded under **Windows-1252** standard will automatically compile to **UTF-16LE**, and the result is the same. Or we can understand that Notepad automatically recognizes the characters 'represent' for Chinese, and then automatically compiles them into Chinese.

11. Error of Solitaire game

On Windows XP, open Solitaire and press the key combination: Alt + Shift + 2:

Immediately, the game will end and the cards will jump "wildly" like when we completed a game. This phenomenon only exists on Windows XP, and Vista and 7 versions are no longer available.

See more:

1. Hidden features on Windows 10
2. You may not know these 23 hidden features on iOS 10 (Part 1)
3. Extremely cool features on Facebook Messenger (Part 2)

You finished reading the article "**11 strange 'phenomena' of Windows**" edited by the [TipsMake](#) team. We hope this article has provided you with many useful tech tips and tricks. You can search for similar articles on tips and guides. Thank you for reading and for following us regularly.