

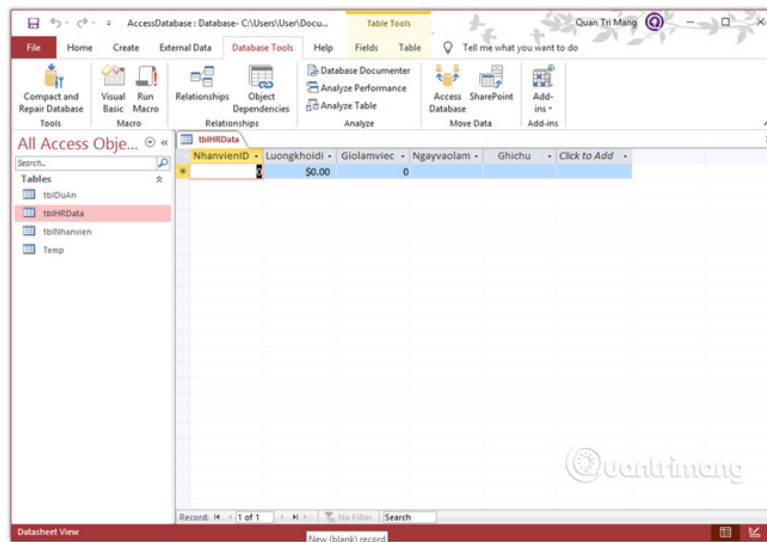
1-1 relationship between tables in ACCESS

1-1 relations are used to link a record from one table to one and only one record in another table.

1-1 relations are used to link a record from one table to one and only one record in another table.

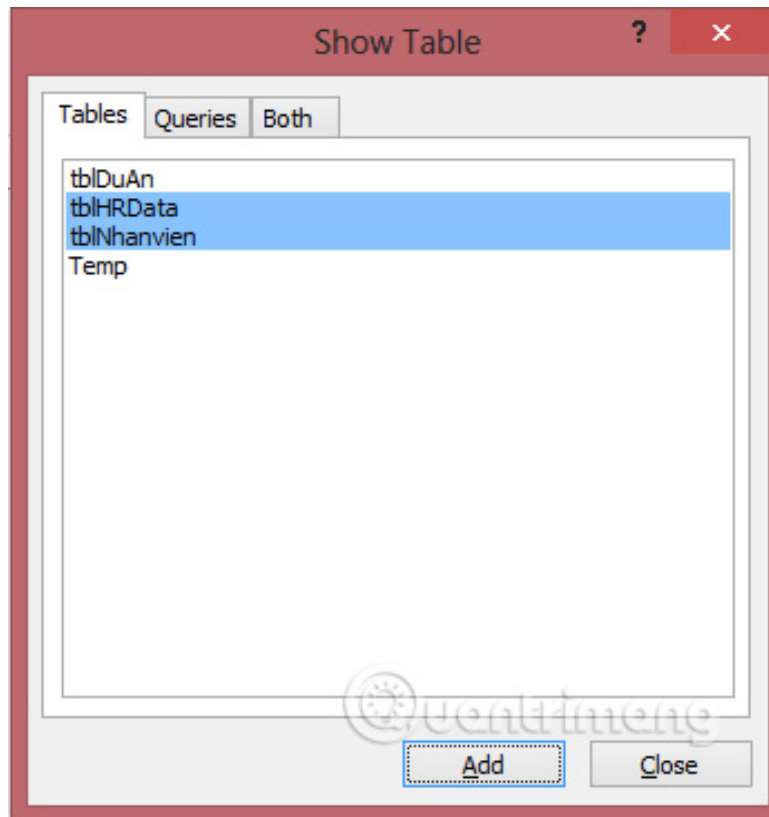
One-to-one relationships are created when both connection fields are primary keys or have unique constraints.

For further clarification, continue with the database and the tables we created in the previous lesson. First, go to the **Database Tools** tab.



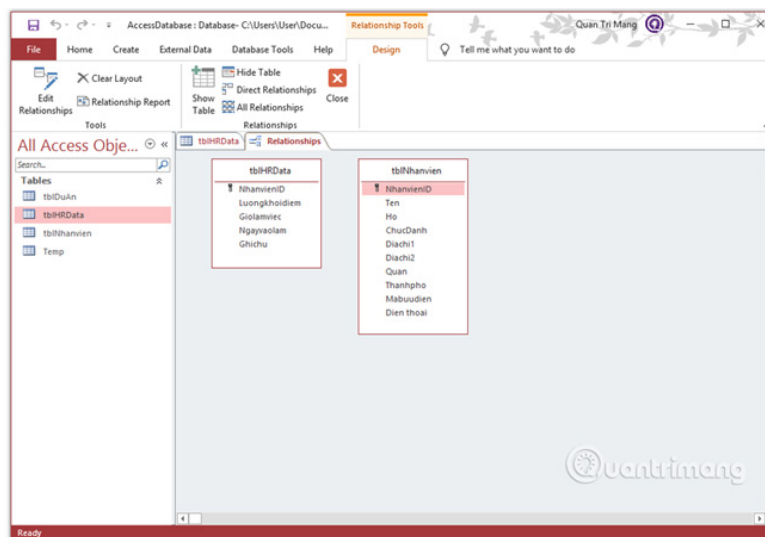
New tblHR Data table is created

Click on **Relationships** option .



The Show Table dialog box appears

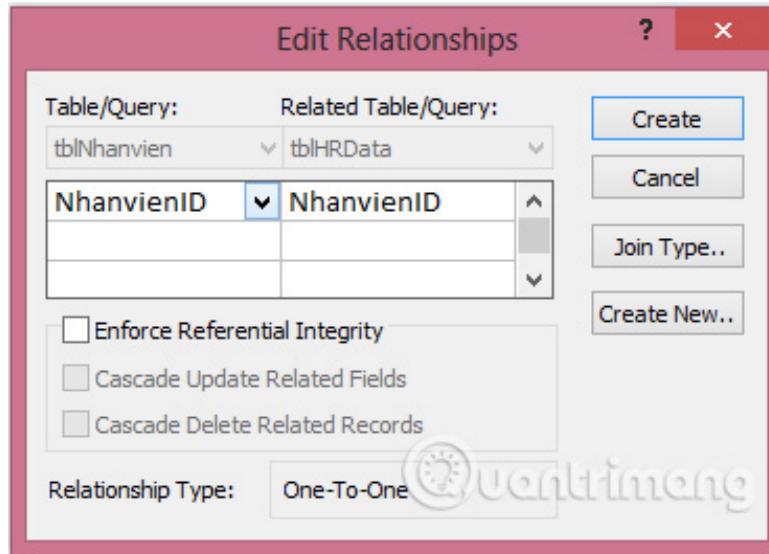
Select the **Members** panel and **tblHRData**, click **Add** to add both tables to the working screen and then close the **Show Table** dialog box .



Both tables tblNhanvien and tblHRData are added to the screen

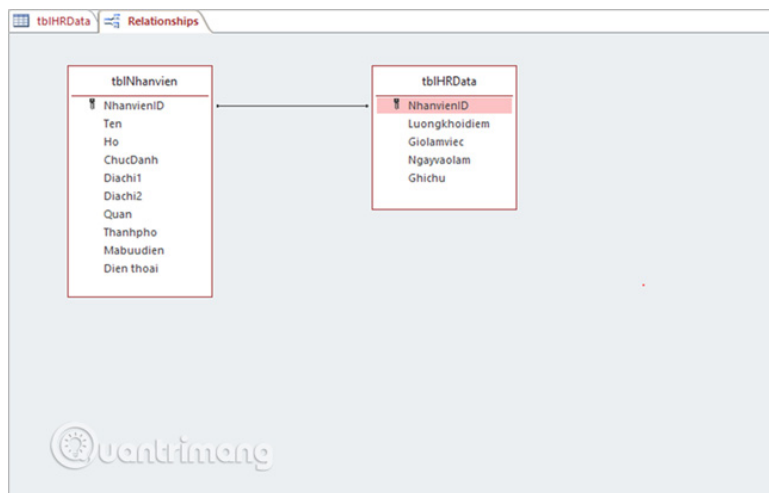
To create a relationship between these two tables, use the mouse to click and hold the **NhanvienID** field in the **tblNhanvien** table , drag the connection to the field you want to connect to in table **tblHRData**. When you

release the mouse, Access will open the following window:



Drag the two NhanvienID fields of the two tables together to display the Edit Relationships dialog box

This **window** relates to the **tblNhanvien** 's **NhanvienID** and **NhanvienID** of **tblHRData**. Click on the **Create** button and now these two tables are connected, establishing a relationship with each other.



Two tables after establishing a relationship will show up like this

This relationship is automatically saved by Access without saving . Recently we have created the most basic relationship, next, choose each table to see if there is anything different from the beginning.

You open the table **tblNhanvien**.

NhanvienID	Ten	Ho	ChucDanh	Diachi1	Diachi2	Quan	Thanhpho	Mabuudien
1	Huyen	Nguyen	Bien dich	56 Duy Tan	144 Cau Giay	Cau Giay	Ha Noi	10000
2	Thuy	Bui	Truong nhom	56 Duy Tan	134 Tran Dang I	Cau Giay	Ha Noi	10000
3	Ha	Nguyen	Bien dich	56 Duy Tan	56 Dich Vong	Cau Giay	Ha Noi	10000
4	Hai	Pham	Bien dich	56 Duy Tan	12 Dich Vong	Cau Giay	Ha Noi	10000
5	Phuong	Phung	Bien tap	56 Duy Tan	211 Xuan Thuy	Cau Giay	Ha Noi	10000
6	Trang	Nguyen	Bien tap	56 Duy Tan	84 Hoang Quoc	Cau Giay	Ha Noi	10000
7	Minh	Nguyen	Bien tap	56 Duy Tan	22 To Hieu	Cau Giay	Ha Noi	10000
8	Quyên	Le	Bien tap	56 Duy Tan	34 Dich Vong H	Cau Giay	Ha Noi	10000
11	Hanh	Vu	Bien dich	56 Duy Tan	32 Duy Tan	Cau Giay	Ha Noi	10000
* (New)								

The tblNhanvien table has not seen a change

Normally on the left side of each record, you will see a small plus sign by default. When creating a relationship, Access automatically adds a child datasheet to the table.

NhanvienID	Ten	Ho	ChucDanh	Diachi1	Diachi2	Quan	Thanhpho	Mabuudien
1	Huyen	Nguyen	Bien dich	56 Duy Tan	144 Cau Giay	Cau Giay	Ha Noi	10000
* Luongkholdi - Giolamviec - Ngayvaolam - Ghichu - Click to Add -								
	\$0.00		0					
2	Thuy	Bui	Truong nhom	56 Duy Tan	134 Tran Dang I	Cau Giay	Ha Noi	10000
3	Ha	Nguyen	Bien dich	56 Duy Tan	56 Dich Vong	Cau Giay	Ha Noi	10000
4	Hai	Pham	Bien dich	56 Duy Tan	12 Dich Vong	Cau Giay	Ha Noi	10000
5	Phuong	Phung	Bien tap	56 Duy Tan	211 Xuan Thuy	Cau Giay	Ha Noi	10000
6	Trang	Nguyen	Bien tap	56 Duy Tan	84 Hoang Quoc	Cau Giay	Ha Noi	10000
7	Minh	Nguyen	Bien tap	56 Duy Tan	22 To Hieu	Cau Giay	Ha Noi	10000
8	Quyên	Le	Bien tap	56 Duy Tan	34 Dich Vong H	Cau Giay	Ha Noi	10000
11	Hanh	Vu	Bien dich	56 Duy Tan	32 Duy Tan	Cau Giay	Ha Noi	10000
* (New)								

A child datasheet appears when you click on the small plus sign before the record

Click the plus sign and you will see information related to the records available on the tblHRData table .

NhanvienID	Ten	Ho	ChucDanh	Diachi1	Diachi2	Quan	Thanhpho	Mabuudien
1	Huyen	Nguyen	Bien dich	56 Duy Tan	144 Cau Giay	Cau Giay	Ha Noi	10000
* Luongkholdi - Giolamviec - Ngayvaolam - Ghichu - Click to Add -								
	\$10,000.00		40		11/5/2018			
	\$0.00		0					
2	Thuy	Bui	Truong nhom	56 Duy Tan	134 Tran Dang I	Cau Giay	Ha Noi	10000
3	Ha	Nguyen	Bien dich	56 Duy Tan	56 Dich Vong	Cau Giay	Ha Noi	10000
4	Hai	Pham	Bien dich	56 Duy Tan	12 Dich Vong	Cau Giay	Ha Noi	10000
5	Phuong	Phung	Bien tap	56 Duy Tan	211 Xuan Thuy	Cau Giay	Ha Noi	10000
6	Trang	Nguyen	Bien tap	56 Duy Tan	84 Hoang Quoc	Cau Giay	Ha Noi	10000
7	Minh	Nguyen	Bien tap	56 Duy Tan	22 To Hieu	Cau Giay	Ha Noi	10000
8	Quyên	Le	Bien tap	56 Duy Tan	34 Dich Vong H	Cau Giay	Ha Noi	10000
11	Hanh	Vu	Bien dich	56 Duy Tan	32 Duy Tan	Cau Giay	Ha Noi	10000
* (New)								

Enter the required information right in this datasheet

Click on the Save icon and open tblHRData, you will see the entered data already here.

NhanvienID	Luongkholdi	Giolamviec	Ngayvaolam	Ghichu	Click to Add
1	\$10,000.00		40	11/5/2018	
0	\$0.00		0		

Data entered directly in tblNhanvien table are connected and appear in table tblHRData

Previous article: Establish relationships between tables in Access 2016

Next lesson: 1-n relationship between tables in ACCESS

You finished reading the article "**1-1 relationship between tables in ACCESS**" edited by the [TipsMake](#) team. We hope this article has provided you with many useful tech tips and tricks. You can search for similar articles on tips and guides. Thank you for reading and for following us regularly.
