

11 computer problems and workarounds

PC World technology website lists the most common questions of people using PCs or laptops and offers solutions.

PC World technology website lists the most common questions of people using PCs or laptops and offers solutions.

Why do I plug the iPad into the computer and show 'not charging' (not charging)?



The computer's USB line is not enough power to charge the iPad like a dedicated charger. However, when the screen is turned off, the iPad plugged into the USB port can still charge at a slow speed.

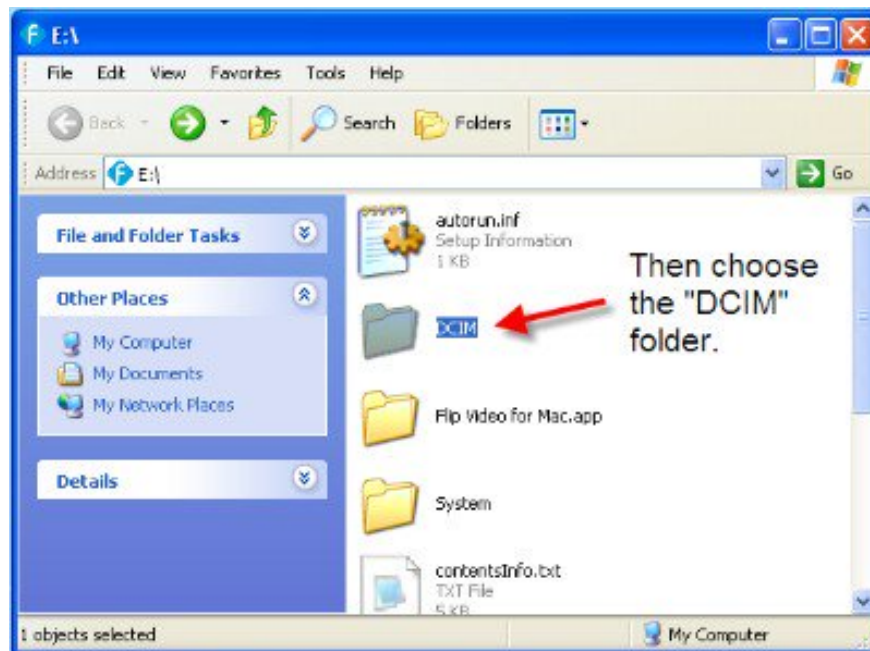
In a folder containing all images, a file called Thumbs.db appears. What does that file do and is it safe to delete it?



Thumbs.db is a file system in Windows XP that contains the cache of enlarging images in folders. It helps users to re-open the photo folder will not take as much time as the first time.

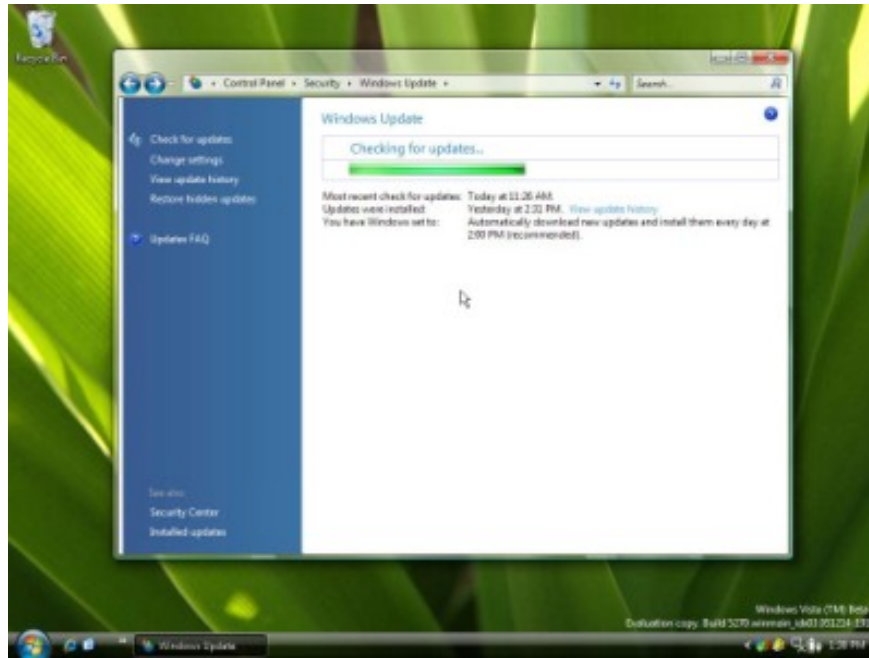
Users can delete this file and not affect the system, however, experts recommend leaving it.

Why do all cameras and even phones save pictures in a folder called DCIM?



DCIM stands for phrase (Digital Camera Images) and the default save on that folder will help users easily find photos.

Windows naturally reboots without permission.

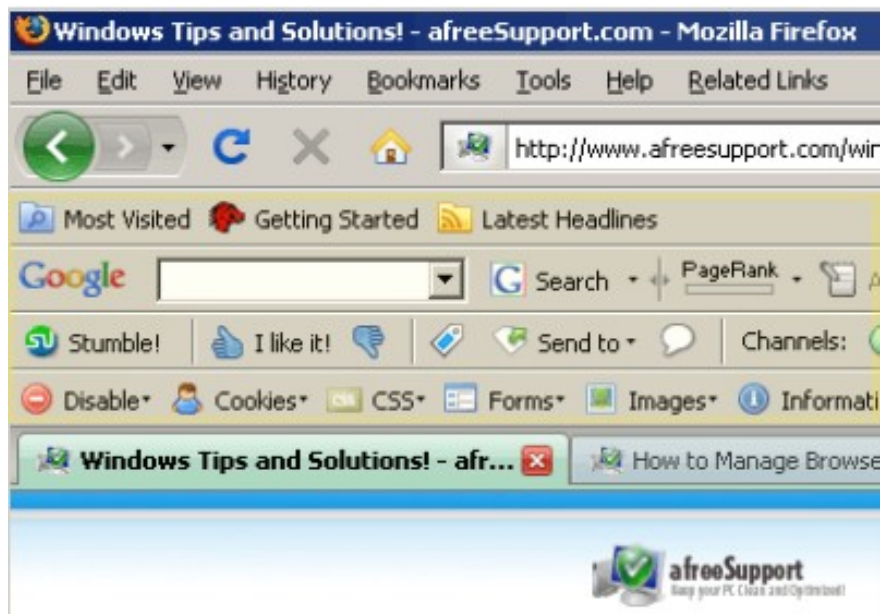


This issue involves automatic updating of Automatic Updates operating system. After downloading and installing, Windows will automatically restart the computer after a few minutes. Users can also customize this feature by right-clicking **My Computer** , clicking **Properties** and then **Automatic Updates** .

The computer has Microsoft Office software installed but cannot read the .docx file.

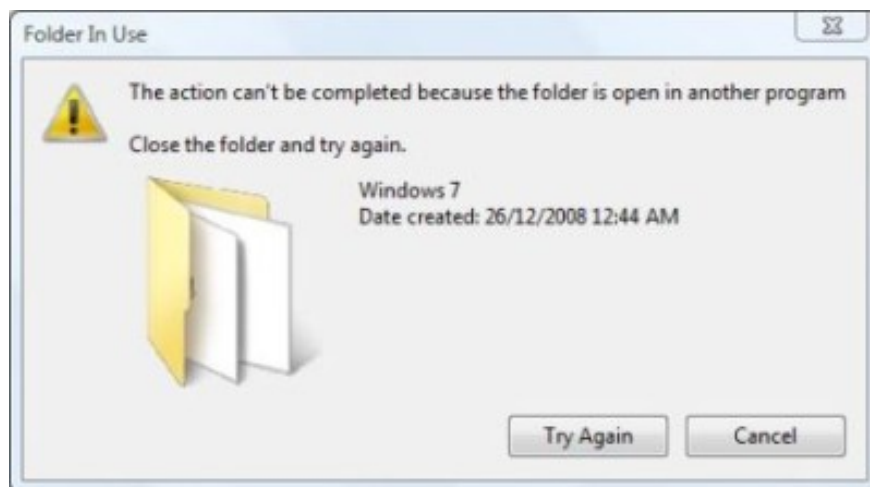
If the PC only installs Office 2003 software, it will not read the Office 2007 .docx format. To fix this, users must download additional add-ons for Word 2000, XP or 2003.

Why appear many strange Toolbar on browsers?



The strange Toolbar appears on browsers may be installed by spyware or by users accidentally installing when installing other software. For example, at the end of installing the update for Java, there will be a Yahoo Toolbar option.

The PC does not remove files or folders even though it has been tried many times



If Windows does not delete the data, it means that the application is accessing the file. The easiest way is to reboot the computer, not run any programs and delete files.

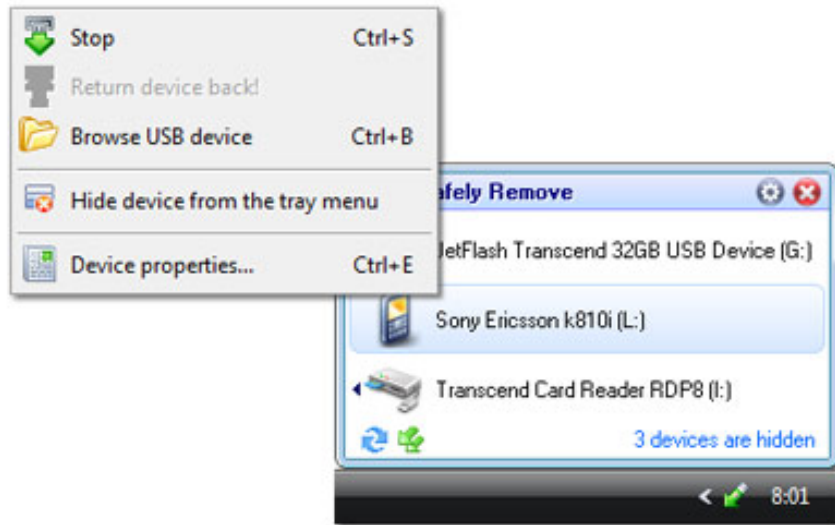
Should I need to use the Windows Update feature?

Microsoft always recommends that users turn on the automatic updating of the operating system to improve stability, hardware and software compatibility and, more importantly, increase security.

After uninstalling the software, its folder and file are still there.

Many programs are not really effective at automatically uninstalling. To fix this, users can install the 3rd free software to remove applications such as iObit Uninstaller .

Is it really necessary to use the "Safely Remove" feature every time a USB drive is removed?



If the user does not use the " **Safely Remove** " mode every time the USB is unplugged, the possibility of unreadable data or corrupted files will occur.

What does a PC make a beep every time it starts, what does it mean?

```

CPU Type      : AMD Athlon(tm) XP      Base Memory   : 640K
CPU ID       : 0681                   Extended Memory : 1047552K
CPU Clock    : 2000MHz                L1 Cache Size : 128K
                                                L2 Cache Size : 256K

Diskette Drive 0 : 1.44M, 3.5 in.      Display Type   : EGA/UGA
Pri. Master Disk : LBA,ATA 100,40022MB Serial Port(s) : 3FB 2FB
Pri. Slave Disk  : LBA,ATA 100,40062MB Parallel Port(s) : 378
Pri. Master Disk : DUD,ATA 33         DDR DIMM at Rows : 2 3 4 5
Sec. Slave Disk  : CHS,PID 4, 512MB

PCI device listing ...
Bus No. Device No. Func No. Vendor/Device Class Device Class      IRQ
0       2       0       10DE 0067 0C03 USB 1.0/1.1 OHCI Controller 10
0       2       1       10DE 0067 0C03 USB 1.0/1.1 OHCI Controller 11
0       2       2       10DE 0068 0C03 USB 2.0 EHCI Controller   5
0       9       0       10DE 0065 0101 IDE Controller            14
0       13      0       10DE 006E 0C00 Serial Bus Controller      10
1       8       0       1106 3043 0200 Network Controller          11
1       9       0       1102 0002 0101 Multimedia Device         11

```

'Beep' on the PC is emitted from the BIOS (motherboard management software). It signals the user the status of the operation and the cause of the error when starting the computer.

You finished reading the article "**11 computer problems and workarounds**" edited by the [TipsMake](#) team. We hope this article has provided you with many useful tech tips and tricks. You can search for similar articles on tips and guides. Thank you for reading and for following us regularly.