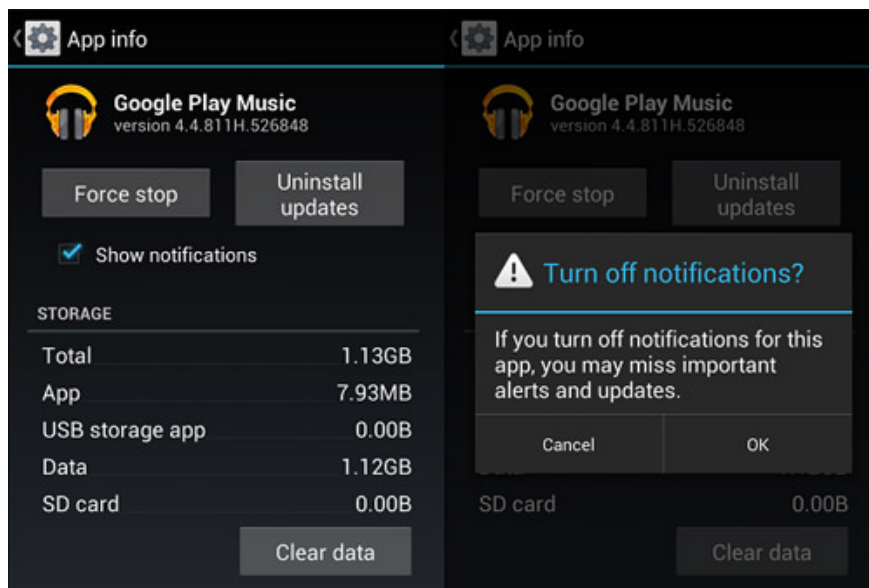


10 useful tips for Android users

If you have been using Android devices for a long time, you do not fully understand the features on your device. Let's consult 10 useful tips below when using Android devices offline.

If you are a user of **Android devices**, do not ignore the good and useful tips below. A few tips will help your **Android device** battery be more durable, save **Data** packets when you go online . And especially the tips to help you use **Android devices** run smoother.

1. Disable application notifications

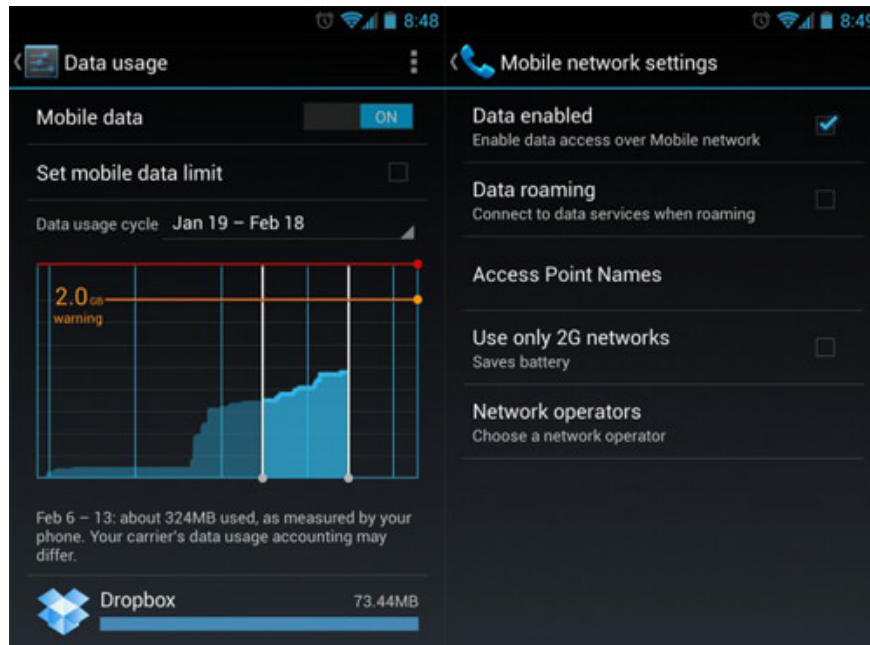


Sometimes getting too many app notifications makes you feel uncomfortable, even if these notifications cause your phone or **Android device to run** out of battery quickly.

To turn off application notifications, follow the steps below:

1. On any notification on the notification toolbar, simply press and hold on the notification until the dialog box appears.
1. Touch the **App Info** lightly and remove the checkmark in **Show Notifications** then select **OK** .

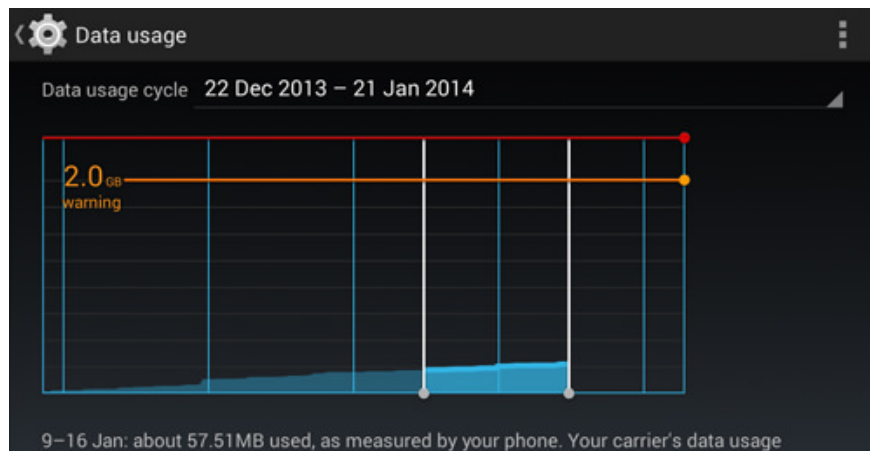
2. Disable Data packets



Whenever you do not want to use the Data package on your phone to connect to the network, you can disable this **Data** package to keep your phone battery long.

1. Go to **Settings** (Setting) select **Use data (Data Usage)**
1. Disable **Mobile Data** by touching on / off data package function, switch from **On** to **Off** .

3. Set up mobile data limits

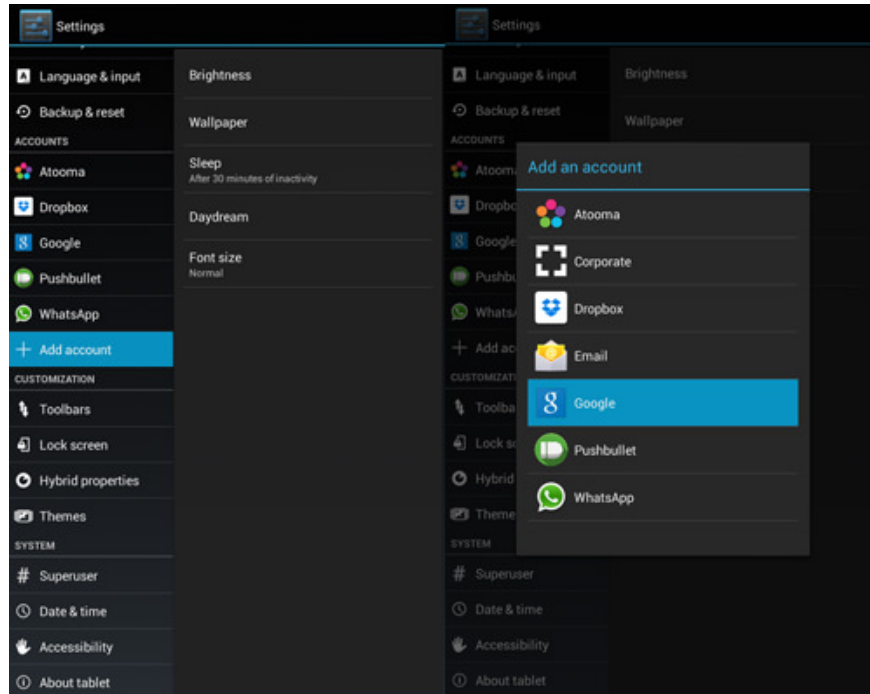


If you want to track your monthly mobile data usage and set the maximum amount of data you want to use during the month, you can do the following:

1. Go to **Settings** (Setting) select **Mobile data** (Data Usage .).
1. Set mobile data limit by dragging the orange line to the data you want to use every month.

You will be alerted if you use the data level you have set.

4. Set up multiple Google accounts

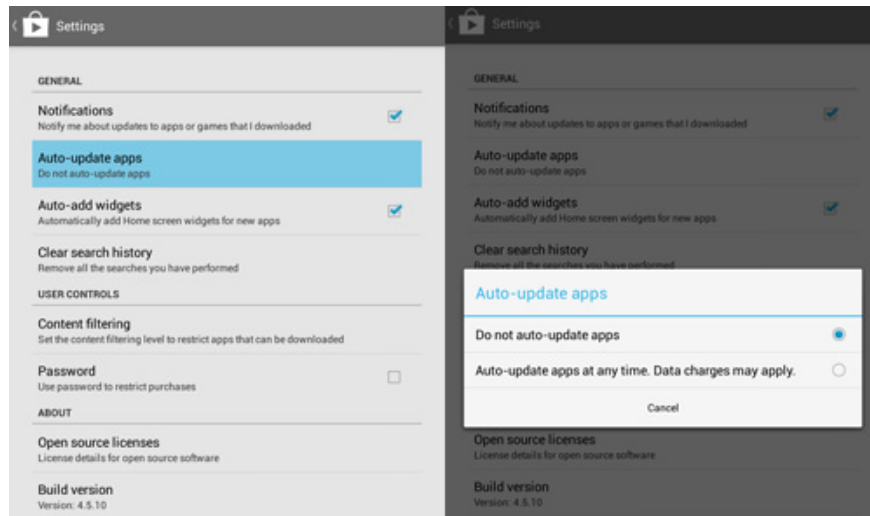


To set up multiple **Google** accounts, follow these steps:

1. Go to **Settings**, select **Account and sync** (accounts and sync) then select **Add account** (Add account).
1. Select **Google** and set up a new **Google** account.
1. After adding a new **Google** account, select what you want to sync with your account.

Repeat all the steps above if you want to add more accounts.

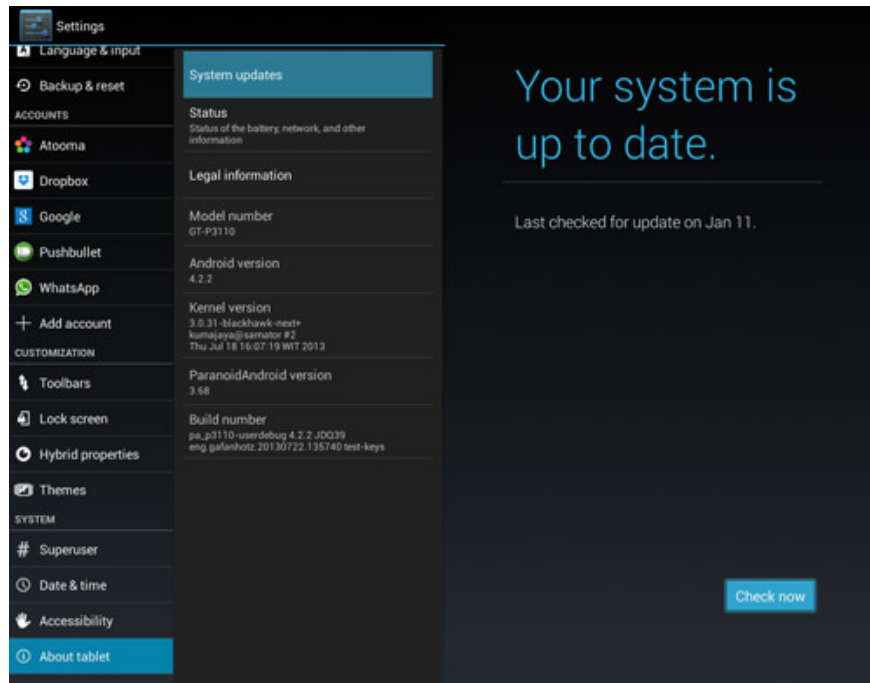
5. Disable automatic application update mode



The fact that automatic update applications sometimes cause your device, **Android** phone to be slow, **3G** data consuming (in case if you are not connected to Wifi) or even if many applications update at the same time can cause the device to hang. To disable (disable) the automatic update mode of the application, follow these steps:

1. Open **Google Play Store** (**CHPlay** on **Android phones**). On the **Play Store** homepage, click the **Menu** button in the upper left corner of the screen.
1. Touch **Settings (Settings)** on the **Menu**.
1. Touch the **Auto-update apps** (automatically update the app).
1. To turn off the auto update feature, lightly tap the '**Do not Auto-update apps**' item on the screen.

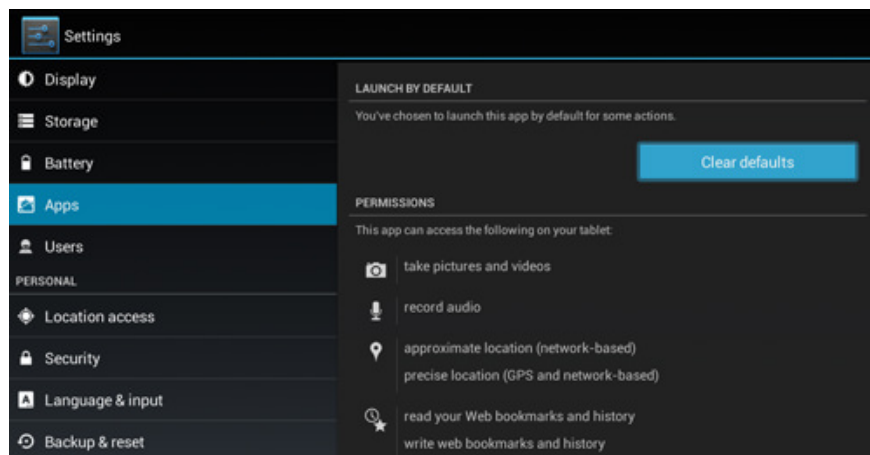
6. Check Android system updates



For **Android** users who are using **Stock ROM** can check the system update by:

1. Go to **Settings**, select **About phone / tablet** (**About Phone / Tablets**) .
1. Touch **System Updates** .
1. Tap on **Check** (**Check now**) to check for system updates on your **Android device** .

7. Change the default application



If you want to change some default applications to fulfill specific requirements:

1. Go to **Settings** (**Apps**) to select **Applications** (**Apps**).
1. Swipe right and switch from **Downloaded** tab (**Downloaded**) to **All** tab (**All**) .

1. Select the application you want to remove by default.

1. Touch select **Clear defaults** .

8. Compact setting of the main screen



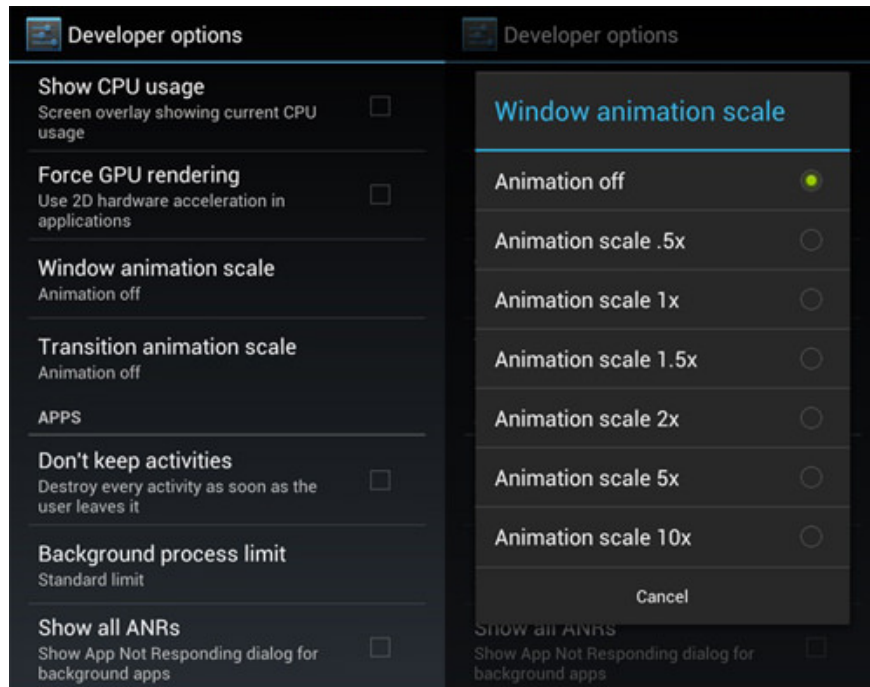
Suppose you have many shortcuts on the screen, if you want to make shortcuts on the screen, long press on any shortcuts and drag it to another shortcut.

1. A circle will appear around these shortcuts indicating that a folder has been created.

1. By clicking on the newly created folder, a small window will pop up with your shortcuts in it.

1. You can drag and drop additional shortcuts to this folder if you want. You can also rename the folder by clicking on the small name box located at the bottom of the folder window.

9. Disable dynamic effects

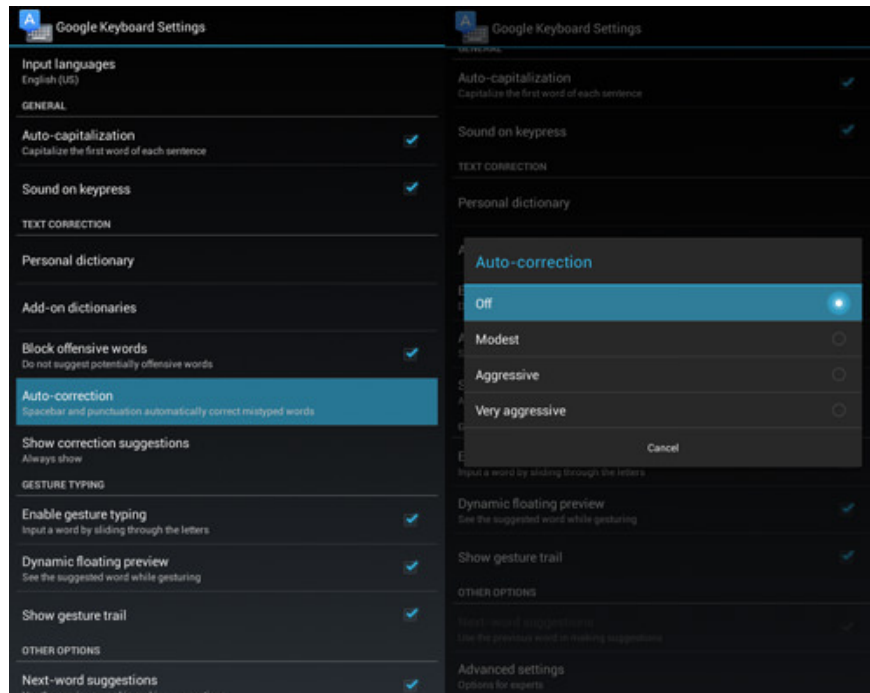


If you want your **Android devices** to run smoother, you should disable the animation effect. You must have access to the **Developer Option** in **Settings** or **Device Introduction (About device)** .

Note: For a phone number, you may need to go to the **Build number** section and click on it several times until you see the "**You are now a developer!**" Message, the new **Developer Option** appears.

Under the **Developer Option** option enabled, search for **Window animation scale** , **Transition animation scale** , and **Animator duration scale** . Then, turn off (disable) all of them at once.

10. Turn off the automatic correction of spelling errors



To turn off automatic spelling correction when you compose a message, follow the steps below:

1. Go to **Settings (Settings)** select **Language and input (Language & input)**.
1. Touch the settings icon next to the keyboard you are using.
1. Find **Auto-correction** and touch it to select it.
1. A dialog box appears on which images with **off, simple, flexible, and very flexible** modes. Select **Off (Off)** to turn off this feature.

Explore more:

1. **How to turn off automatic updating of apps on Android?**
2. **3 ways to uninstall apps for Android devices**
3. **10 easy video editing applications on Android**

Good luck!

You finished reading the article "**10 useful tips for Android users**" edited by the [TipsMake](#) team. We hope this article has provided you with many useful tech tips and tricks. You can search for similar articles on tips and guides. Thank you for reading and for following us regularly.
