

10 Snapseed tips for faster image editing

This article will tell you some quick photo editing tips with Snapseed application on Android and iOS.

Every photo you take on your smartphone will look better thanks to mobile photo editing applications. This article will tell you some quick photo editing tips with Snapseed application on Android and iOS.

With Snapseed you won't need to use Lightroom or Photoshop to edit photos. It can make your photo look better without any problems, it's free.

Snapseed is the best free photo editing application for Android and iOS. A few years ago Google bought Snapseed and increased its development.

Snapseed's user interface can make new users feel confused but just spend a few minutes getting to know you will soon catch and master it.

1. Stunning photo editing on smartphones with Snapseed
2. How to delete an image object using the Snapseed application
3. How to create artistic text using Snapseed image editing application

Here are some tips to help you edit photos faster.

1. Editing images

OPEN



Tap anywhere to open a photo



OPEN



Open from device



Camera



Open latest image



OPEN



Last edits



Portrait



Smooth



Pop



Accentuate Fac

LOOKS

TOOLS

EXPORT

When the image is loaded, you will see three buttons below **Looks** , **Tools** and **Export** . **Looks** option provides some filters available or you can use your filter. When you start editing, tap the **Tools** button and select **Tune Image** .

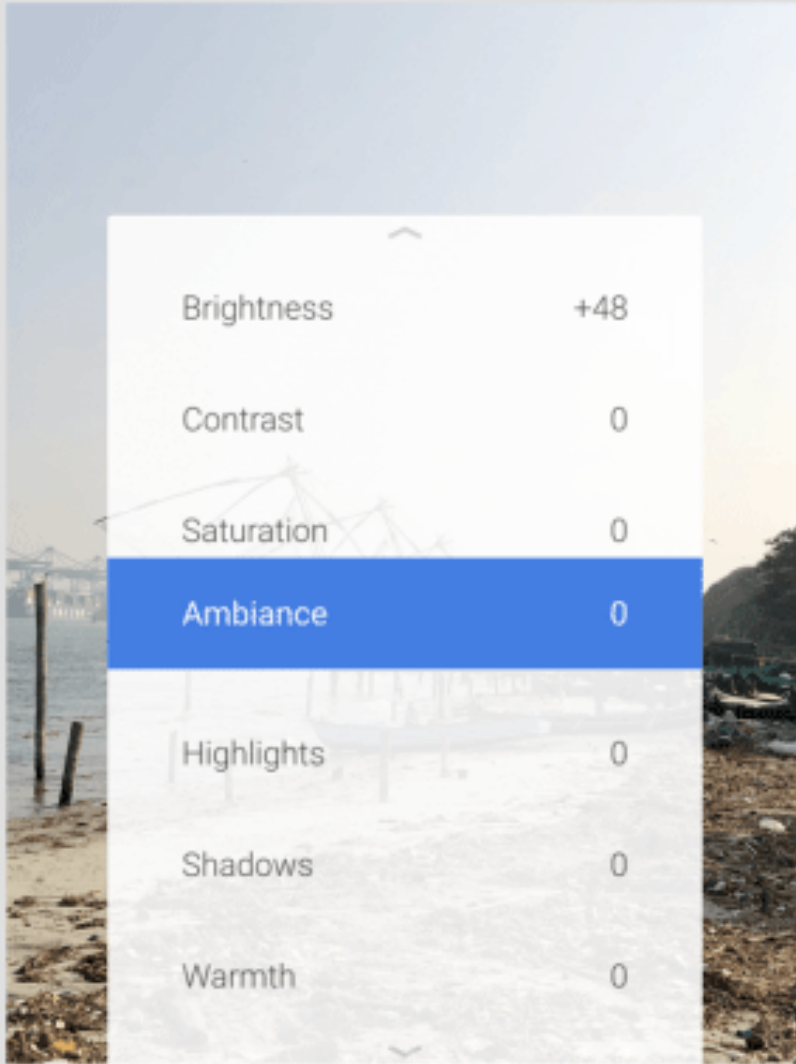
Tune Image has basic editing features such as brightness and contrast. By default, brightness will be selected, you can swipe right to increase or to the left to reduce brightness. The numerical brightness value will be displayed at the top.



Brightness +45



Ambiance 0



Brightness	+48
Contrast	0
Saturation	0
Ambiance	0
Highlights	0
Shadows	0
Warmth	0



Highlights -44



To switch to another tool, just swipe up or touch the **Tools** button in the bottom bar. Touch the image and hold to see the difference between the original image and the edited image.

The following tools are available in the **Tune Image** section:

1. **Brightness** : You can use this tool to add light to dark photos or to reduce light if the image is too bright.
2. **Contrast** : **Contrast** increases or decreases the difference between the darkest part and the brightest part of the image.
3. **Saturation** : Increasing saturation makes colors more vivid. Use it if you want the image to stand out.
4. **Ambiance** : Ambiance allows you to adjust saturation and contrast at the same time.
5. **Highlights** : Highlights help you edit the intensity of the brightest areas in the image. So, if an image is overexposed, reduce the highlights.
6. **Shadows** : Shadows perform similarly to highlights but for the darkest areas of the image.
7. **Warmth** : Warmth adds warm orange or cool blue tones to your entire image. Using this tool, you can instantly turn an orange sky into a cool blue sky.

To capture and give more details, try shooting in RAW format.

1. The best Raw photography app for Android

2. Change structure and sharpness

Structure +52



Sharpening +31



Structure	+52
Sharpening	+31



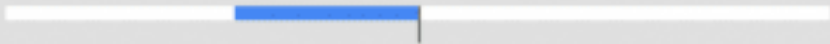
Go back to the **Tools** section and click **Details** . Here you will see two **Structure** and **Sharpening options** . This tool works well if your photos have texture elements (like wood).

The **Structure** tool will help you add a Wow effect to your photo but remember not to abuse it. The **Sharpening** tool will improve the details of the image but may cause noise. Therefore you should be careful when using these two tools, enlarge parts of the image before changing to avoid quality degradation.

3. HDR Scape

Filter Strength +37





Brightness -44



Filter Strength	+37
Brightness	-44
Saturation	0



HDR Scape is a tool that brings instant effects to your photos. You should use this tool with photos of nature or people. After selecting it, you will see an image of each detail and color that makes them stand out.

You can adjust filter intensity, saturation and brightness. If you adjust it too much, you can go back to **Tune Image** tool and reduce the level when applying HDR Scape.

4. Add classic feel to Grainy Film

Grain +25



- 1
- B02
- B03
- B04
- L01
- L02
- L



Grain +48



Grain +48



Grain

+48

Style Strength

+80



Grainy Film filters help you create vintage-style photos.

5. Cut the picture





e

Original

DIN

Square

3:2

4:3

!



If there is a high quality original photo, but the location of the object in the photo is not very good, you can use the Crop tool. Cut images so that objects are placed in the middle or in the way they are aligned according to Rule of thirds rules.

6. Change perspective



Tilt



Rotate



Scale



Free







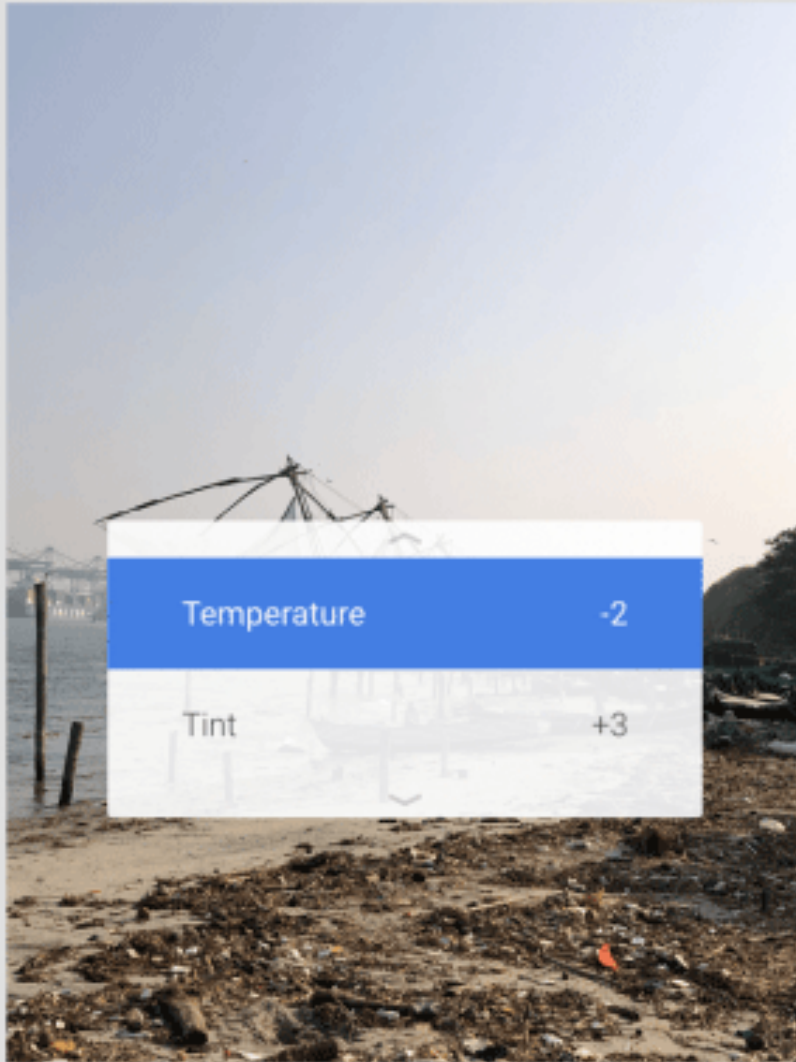
Sometimes what makes the photo more beautiful is not editing, but perspective. Snapseed has a smart **Perspective** tool, you can swipe up, swipe down, left or right to change perspective. Snapseed will automatically fill the gap of the image, but it's best to cut the edges after changing the perspective.

7. Adjust the white balance

Temperature +23



Temperature -2



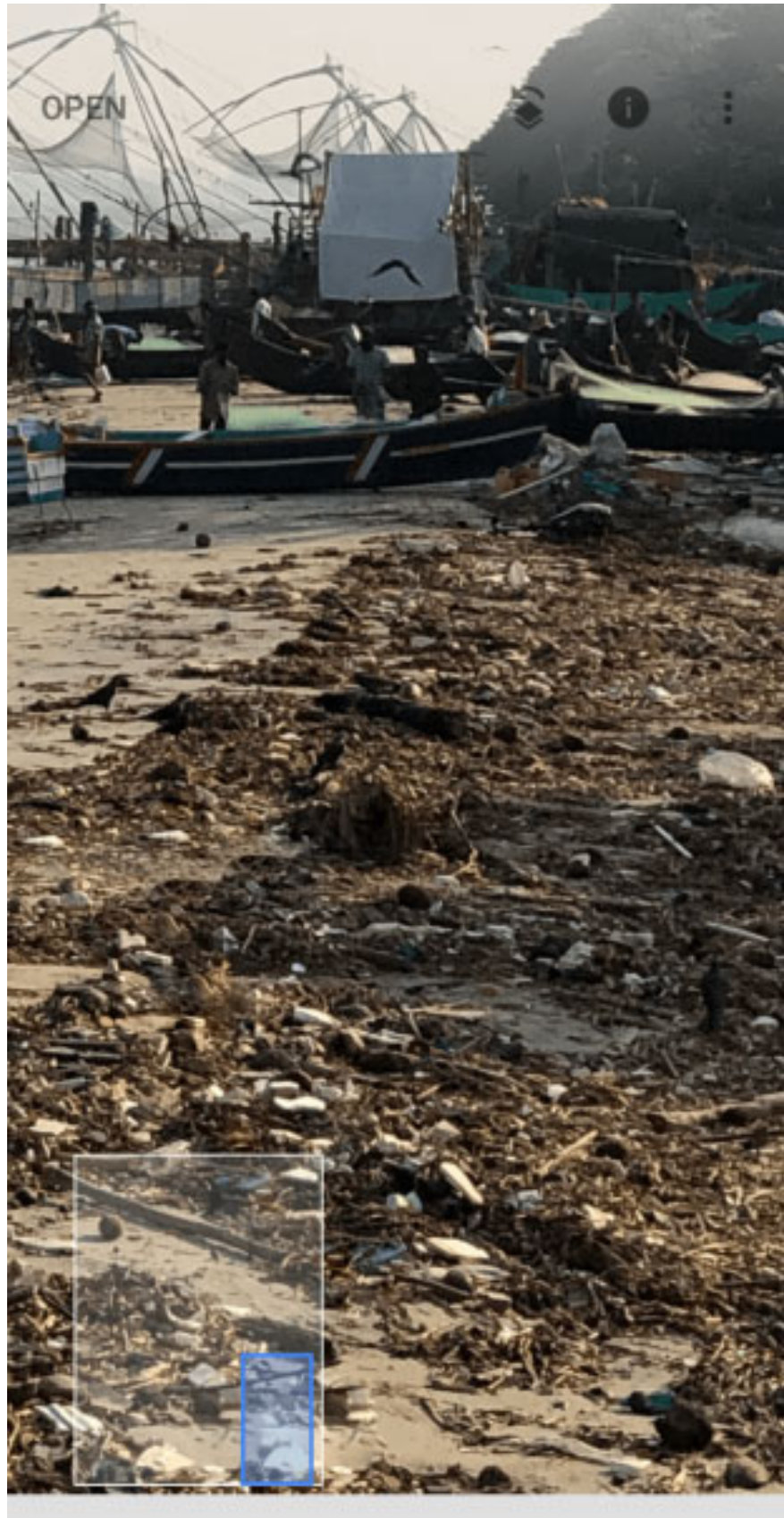
Tint +23



The White Balance is similar to the **Warmth** feature but has additional tints. You can use the **Temperature** tool to add a cool or warm orange color to the image, then switch to the **Tint** tool to add green or pink. This can be a quick and easy way to turn a blue sky into a warm purple sky.

8. Edit the image using the Healing Tool





LOOKS

TOOLS

EXPORT



Healing Tool helps you edit small bugs, spots and stains. You can even move small objects in the image. This tool works well when surrounded by simple objects like sky or human skin.

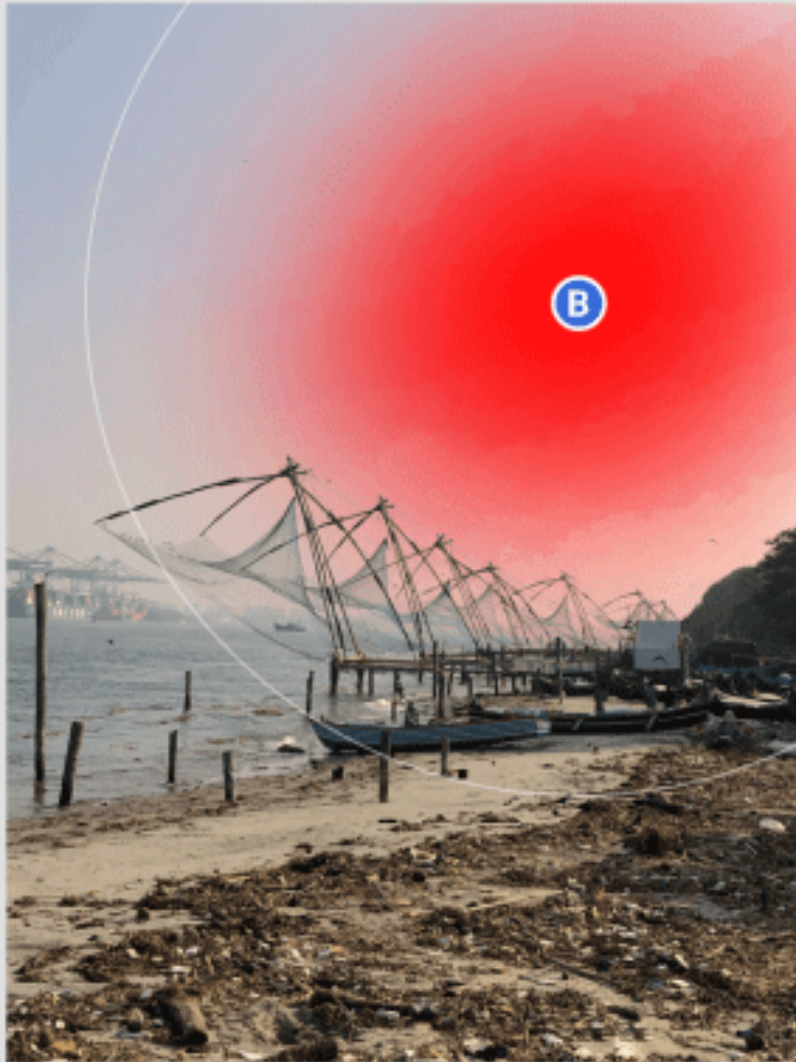
After selecting the **Healing** option, zoom in on the part of the image to edit, then use your finger to touch the part you want to change. It will be highlighted in red. After releasing it, it will automatically be replaced with pixels from the surrounding area.

9. Selective Editing feature

Brightness 0



Brightness 0



Saturation 0



Saturation

- B
- C
- S
- S



Selective Editing is a powerful hidden feature in Snapseed. Touch the **Selective** option, then touch the part of the image you want to edit, pinch two fingers in or out to increase or decrease the selected area size. You can swipe along to switch between Brightness, Contrast, Saturation and Structure. All changes you make to this tool apply only to the specific selected area.

10. Undo tool



Undo



Redo



Revert



View edits



QR look



Healing



Original

If you miss any detailed corrections, you don't need to worry because there's an **Undo** button, which helps you quickly undo the last change. The **View Edits** button will list all the edits made and you can edit a previous change or delete it if desired.

For a free app, Snapseed is a surprisingly powerful photo editing application. And there are some advanced features in Snapseed like Curves and Brush that you should explore once you have a grasp of the basics.

You finished reading the article "**10 Snapseed tips for faster image editing**" edited by the [TipsMake](#) team. We hope this article has provided you with many useful tech tips and tricks. You can search for similar articles on tips and guides. Thank you for reading and for following us regularly.