

# 10 mysterious and strange places appear Google Earth that surprised people

The vast earth has a lot of mysterious lands that people do not know and have not yet arrived. Now, thanks to the Google Earth tool, anyone can search for and discover strange and mysterious places on the planet.

The vast earth has a lot of mysterious lands that people do not know and have not yet arrived. Now, thanks to the Google Earth tool, anyone can search for and discover strange and mysterious places on the planet.

Countless photos taken from satellites in geostationary orbits, satellites near Earth, airplanes, kites, balloons, . compiled by Google Earth to get the full picture of the extremely detailed earth . You only need to download Google Earth software to view these images. Thanks to these images, scientists have discovered extremely strange and mysterious places that have never been known before.



Let's learn about famous places discovered by Google Earth

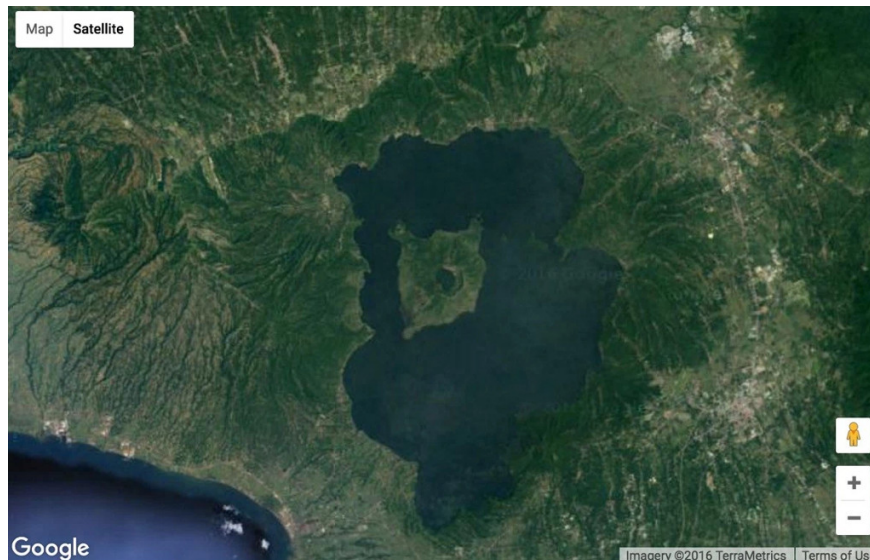
## 1. The mysterious swastika in northern Kazakhstan



More than 50 **ancient Geolyph** figures (giant drawings) have been discovered by scientists in northern Kazakhstan (Central Asia region). They are made of mound and wood with various geometric shapes such as rings, squares, crosses, and swastika, an ancient symbol used by humans about 12,000 years ago. . These ancient Geolyphs have a diameter of 90 - 400m, making it difficult to recognize without Google Earth.

Until now, scientists have not determined who Geolyph was created by and what purpose it was created.

## 2. Island in the island in the Philippines



You will be surprised and stunned when you see this extremely strange image "island in the island". In the Philippines, on the **island of Luzon**, there is Taal Lake, Taal volcano in the lake, a large lake on the top of the volcano, the small island of Vulcan in the middle of the lake.



Luzon Island has become a popular tourist destination by owning one of the most unique structures of the island cluster on earth.

### 3. Exotic wheels in Peru



Google Earth has helped scientists discover a number of ancient sculpture art images on earth. One of them is the wheel shape structure similar to the Nazca drawings dating to about 8,500 years old in Peru.

These wheels come in different shapes from kite, wall, pendant, circle to rectangle. They have a radius of between 25 and 70 meters. Even some wheels are "equipped" with spokes inside.

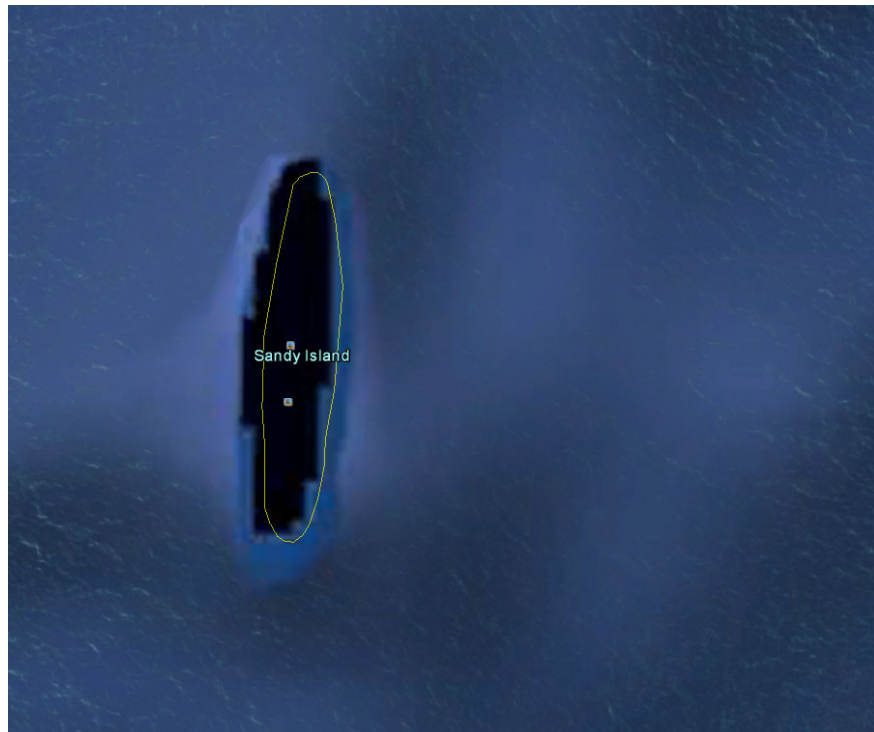
Before the overarching image, archaeologists hypothesize that these structures may be remnants of cemeteries or houses. But after observing them from Google Earth, the new hypothesis suggests that they are related to **UFOs** .

### 4. Giant pyramid in the Pacific Ocean



From Google Earth, a pyramid beneath the Pacific Ocean was discovered. It is estimated that this giant structure is about 13km wide. From the observed image, scientists have not been able to determine whether this is an artificial structure created by humans or this is a natural architecture. The implementation of this architectural excavation is necessary but now scientists are hindered by security and economic conditions in Egypt.

## 5. Mysterious ghost island



A mysterious island appeared on Google Earth, all the scientific maps and weather maps, but no one had ever set foot on it. This "ghost island" is called **Sable** and can be up to 156km<sup>2</sup> in size.

In 2012, Australian scientists announced that this strange island did not exist. So why does it appear on maps and even Google Earth?

## 6. The mysterious five-pointed star mysterious in Kazakhstan



A giant pentagram up to 366 meters in diameter is in a circle on the vast windy steppe of secluded Kazakhstan land discovered by Google Earth. Why does this mysterious star appear in a remote, uninhabited area?

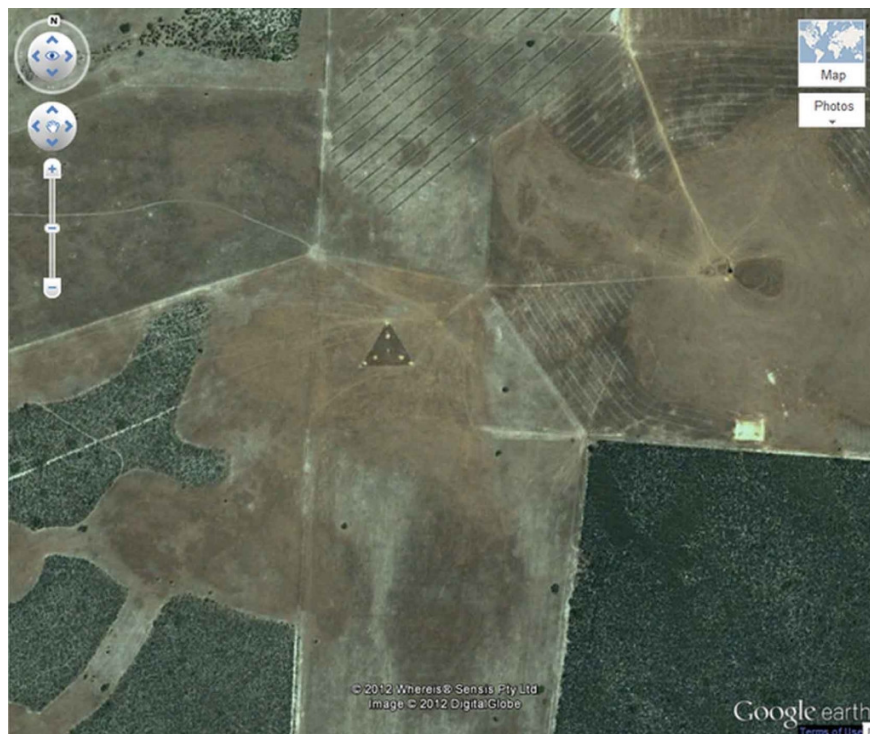
Many people believe that this pentagram is related to devil worship, a cult of evil or some mystical force.

## 7. Lake of blood in Iraq



On the outskirts of the Iraqi city of Sadr, at  $33,396157^{\circ}$  North latitude,  $44,486926^{\circ}$  East Sutra appears a bloody red zone that frightens many people. It is not clear whether this strange red lake has such natural colors or polluted water discharged into the lake.

## 8. UFO triangle



In 2007, it was discovered a strange triangle with bright light emitted at coordinates 30 ° 30'38.44 Great South, 115 ° 22'56.03 East Sutra on a field in Australia. Many users of Google Earth believe that this mysterious triangle is just a random combination of remote control antenna systems and farms here.

But UFO experts believe it is related to UFOs and aliens and calls it "UFO triangle".

## 9. Graveyard of military aircraft



There are many secret military locations hidden, very few people know of their existence. But some of those locations are still detected by Google Earth. One of them is Davis Monthan Air Force Base at Tucson, Ariz. This is the "retirement" place of 2,600 US military aircraft.

## 10. The surface of Mars?



Certainly many mistakenly believe this image captures the Martian surface from an outer space satellite. But actually this is the image taken on our Earth in **the Algerian desert** at coordinates  $31^{\circ} 7'$  Northern latitude and  $7^{\circ} 56'$  East longitude. Many people were amazed to see this picture on Google Earth.

You finished reading the article "**10 mysterious and strange places appear Google Earth that surprised people**" edited by the [TipsMake](#) team. We hope this article has provided you with many useful tech tips and tricks. You can search for similar articles on tips and guides. Thank you for reading and for following us regularly.