

10 important information you should know about Windows computers

Have you ever felt embarrassed when someone asked about the version of Windows you are using? Do you know the amount of RAM installed on your device? Information like this is very important to users when troubleshooting. Therefore, this article will look at some of the information users need to know about Windows computers.

Have you ever felt embarrassed when someone asked about the version of Windows you are using? Do you know the amount of RAM installed on your device? Information like this is very important to users when troubleshooting. Therefore, this article will look at some of the information users need to know about Windows computers.

1. Windows version

Long-time Windows users can easily know Windows versions by looking at the Start menu. For example, the Round Start button is Windows 7, while the full-screen Start is a feature of Windows 8. However, if you don't know these features, there is an easy way to know exactly which version of Windows is. use.

On all Windows versions, just press **Windows + R** to open the Run dialog box, type the **winver** command to open the Windows info window. It provides information about the main version, as well as the correct version and build number. Microsoft regularly updates Windows 10 and adds new features, so it is useful to know the version number you are using.



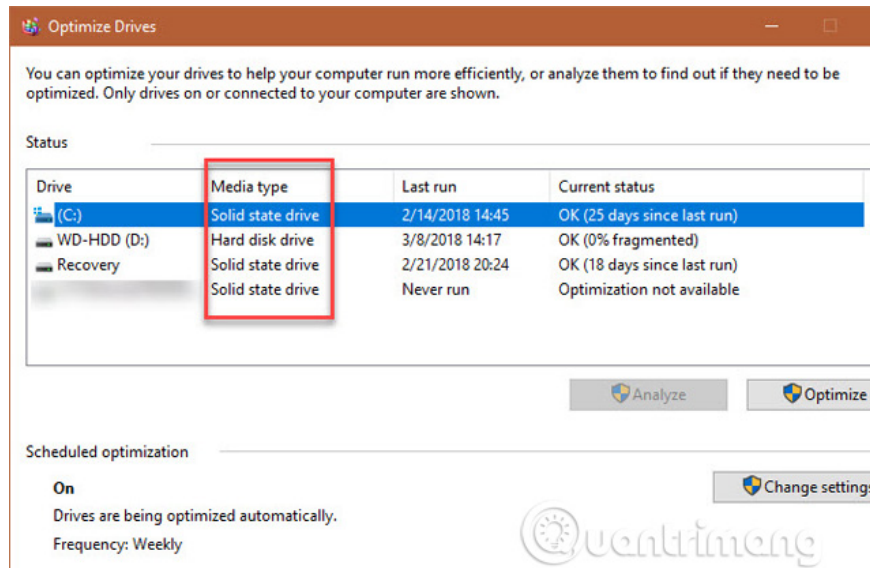
On Windows 10, you can also access **Settings> System> About** and scroll down to **Windows specifications** to find similar information.

1. Determine the Windows version on the system

2. Hard drive information

Users should know about the available space on the hard drive, the type of hard drive in use is SSD or HDD. To see how much space is available, open the File Explorer window and navigate to **This PC**, you will see a list of **Devices and drives**. Computer hard drive will have labels like **C :** and named **Local Disk**. If low capacity will result in low performance experience, you should consider freeing up hard drive space, see article **Some tips to free up Windows 10 computer hard drive space**.

To see the type of hard drive, you can use Windows' built-in utility by typing **defrag** into the **Start** menu to open the **Defragment and Optimize Drives tool**. Find the **C:** drive and you'll see one of two types: solid state hard drive or hard drive next to it.

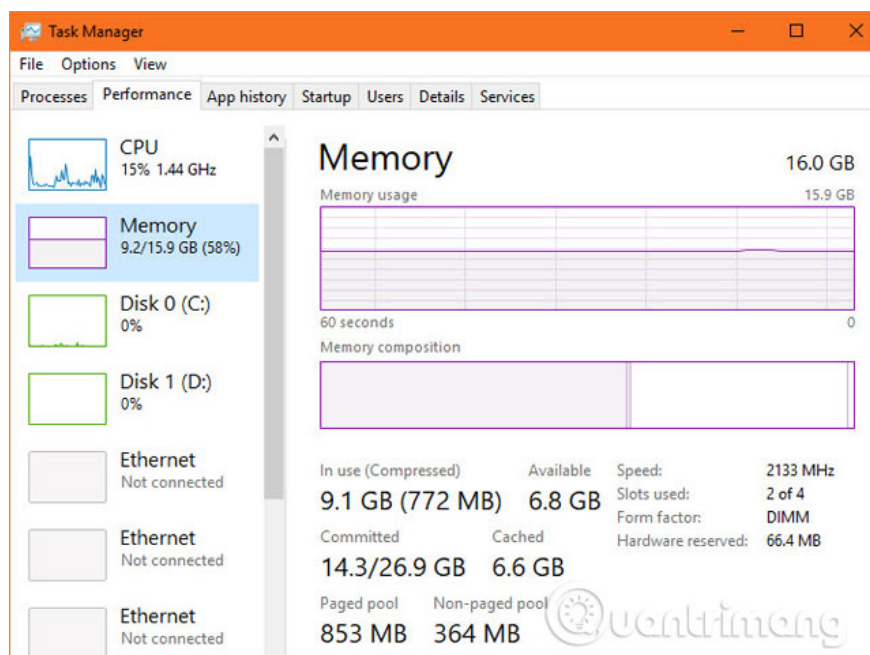


1. 25 interesting things about hard drives you may not know

3. RAM is pre-installed

When you know the amount of RAM, users can consider how many programs to use at the same time to avoid slow performance or whether to buy additional RAM. To check the capacity, just press **Ctrl + Shift + Esc** to open **Task Manager**. If you only see a few programs, click **More details** and switch to the **Performance** tab.

1. How many GB of RAM does your computer need?

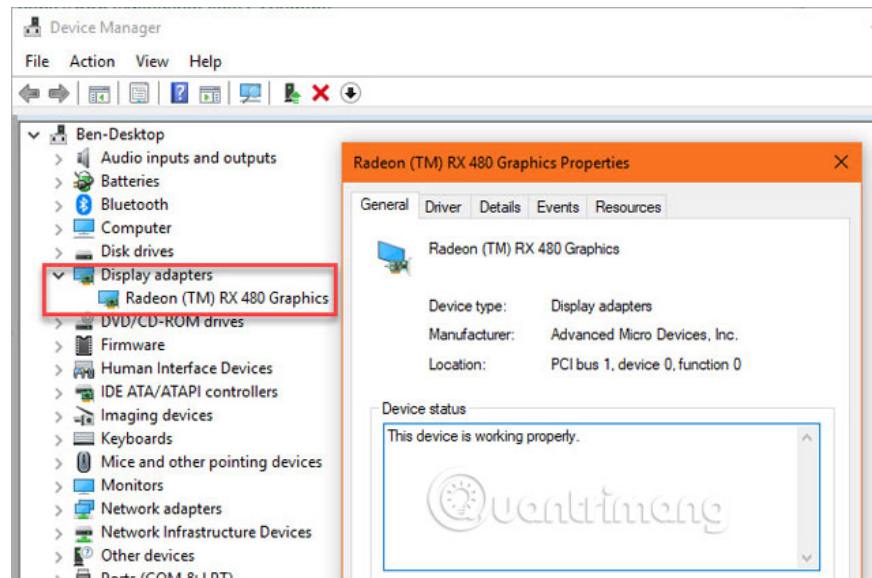


Here, you will see the installed RAM in the **Memory** tab. It also provides used capacity information, letting users know whether to buy more RAM. At the bottom right corner, there is a **Slots used** parameter, indicating the number of available slots on the motherboard that can add RAM.

1. All things about RAM laptop and what you need to know

4. Graphics card

This information is not very important if you do not play games on a PC, but for gamers this is especially necessary.



For information about graphics cards, open **Task Manager** and click on the **GPU** tab on **Performance**, you will see the graphics card name and its specifications. Alternatively, you can type **Device Manager** into the **Start** menu to open this utility, then expand the **Display adapters** tab.

1. Instructions for overclocking graphics cards for better gaming performance

5. Serial number

The computer's serial number is a unique identifier, which is very useful in case of warranty status, driver updates because some computer manufacturers such as Dell and HP require serial numbers on their websites to perform tasks like this.

To find the serial number, you need to open the **Command Prompt** by pressing **Windows + R** to open the **Run** menu, then type **cmd**. At Command Prompt, enter the following command:

```
wmic bios get serialnumber
```

```
C:\WINDOWS\system32\cmd.exe
Microsoft Windows [Version 10.0.16299.248]
(c) 2017 Microsoft Corporation. All rights reserved.

C:\Users\>wmic bios get serialnumber
SerialNumber
System Serial Number
```

If you do not find the serial number when executing the above command it may be because the computer manufacturer did not add this number properly or the computer installed itself. In this case, you can find the serial number on a sticker attached to the computer. If you build your computer yourself, you can find the serial number on each component on its packaging.

1. Instructions on how to find serial numbers of Windows computers

6. Number of battery cycles

You should know that over a period of use, the device battery will gradually run out and stop working. Battery life will not be long if you use and charge them too many times. If you want to know about the health of your laptop battery, you can check its battery cycle.

Open Command Prompt, then type the following command:

```
powercfg / batteryreport
```

Then, access the user directory at **C: UsersUSERNAME** and search for **battery report.html** . Double-click it to open it in the browser and look for **Installed Batteries** .

Design Capacity is the initial maximum load capacity, while **Full Charge Capacity** is the current charging capacity. **Cycle Count** is the number of battery cycles used, the lower the number, the stronger the battery.

1. Do you know how to increase laptop battery life in Windows 10?

7. IP address

The computer's internal IP address identifies it on the home network. Therefore, users should know how to check the IP address that can be used when troubleshooting network problems.

```
Wireless LAN adapter Wi-Fi:
Connection-specific DNS Suffix . : huawei.net
IPv6 Address. . . . . :
Temporary IPv6 Address. . . . . :
Link-local IPv6 Address . . . . . :
IPv4 Address. . . . . :
Subnet Mask . . . . . :
Default Gateway . . . . . :
```

To check the IP address, open the Command Prompt and enter the **ipconfig** command. Find the IPv4 address under Ethernet adapter for wired connection or Wireless LAN adapter for wireless connection.

1. Instructions on how to determine the IP address on the computer

8. Status coding

Computer encryption for data protection is important in this era of continuous monitoring, so you should encrypt your hard drive.

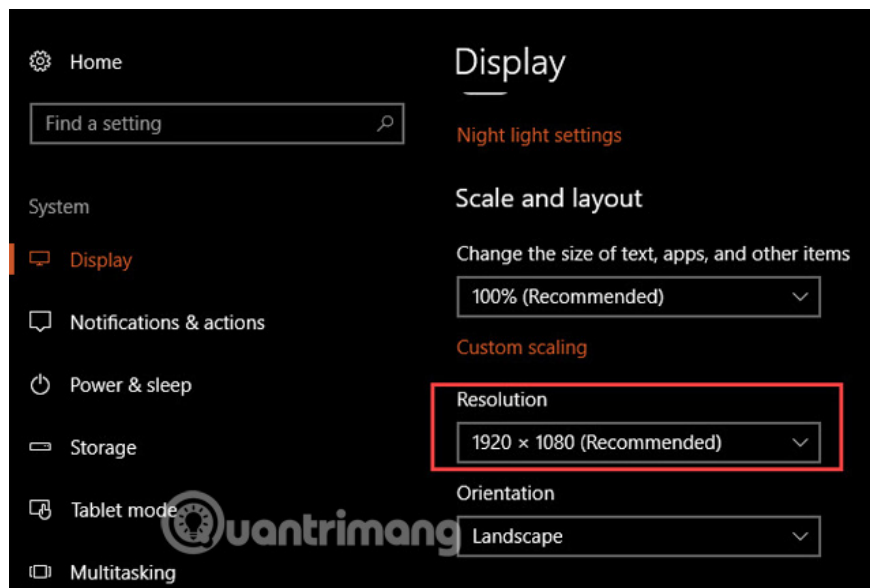
If you use Windows 10 Professional, users have access to BitLocker, Microsoft's encryption tool. You can check whether it is enabled by searching for BitLocker in the Start Menu and opening the Manage BitLocker option, if you see BitLocker off, you have not enabled this feature.



If you use Windows 10 Home, you don't have to pay to use BitLocker because there are many other encryption tools to choose from and VeraCrypt is the best free option.

9. Screen resolution

For screen resolution, right-click the desktop and select **Display Settings** . On Windows 10, you will see this information on the **Display** tab in **System** , scroll down to **Resolution** to see the screen resolution.



If **Recommended**, next to the resolution item, then you are using the correct resolution for the screen. In general, 1920×1080 (1080p HD) resolution is standard. Lower resolution, like 1366×768 popular on cheap laptops, is not sharp and many factors will not match.

1. How to change screen resolution on computers and laptops

10. Windows admin password

This may sound silly, especially if you are the only admin user on your computer. But restoring the Windows admin password is no easy task when you forget it. If you use a Microsoft account to log in, recovering your password will be easier than using an account on your computer, but it's best not to forget it. Consider keeping an administrator password in a safe place, such as a fire safe or password manager.

1. Instructions on how to login to your computer when you forget your password

Taking the time to know 10 computer information is very useful especially when troubleshooting.

See more:

1. 4 simple ways to check the configuration and hardware information of computers and laptops
2. Decode the specifications on the laptop
3. Introduce how to find the model and manufacturer of the motherboard

You finished reading the article "**10 important information you should know about Windows computers**" edited by the [TipsMake](#) team. We hope this article has provided you with many useful tech tips and tricks. You can search for similar articles on tips and guides. Thank you for reading and for following us regularly.