

10 hidden modes in Windows and how to use them

Did you know that Windows has many hidden modes, activating additional functions, helping you troubleshoot or improve performance for certain tasks?

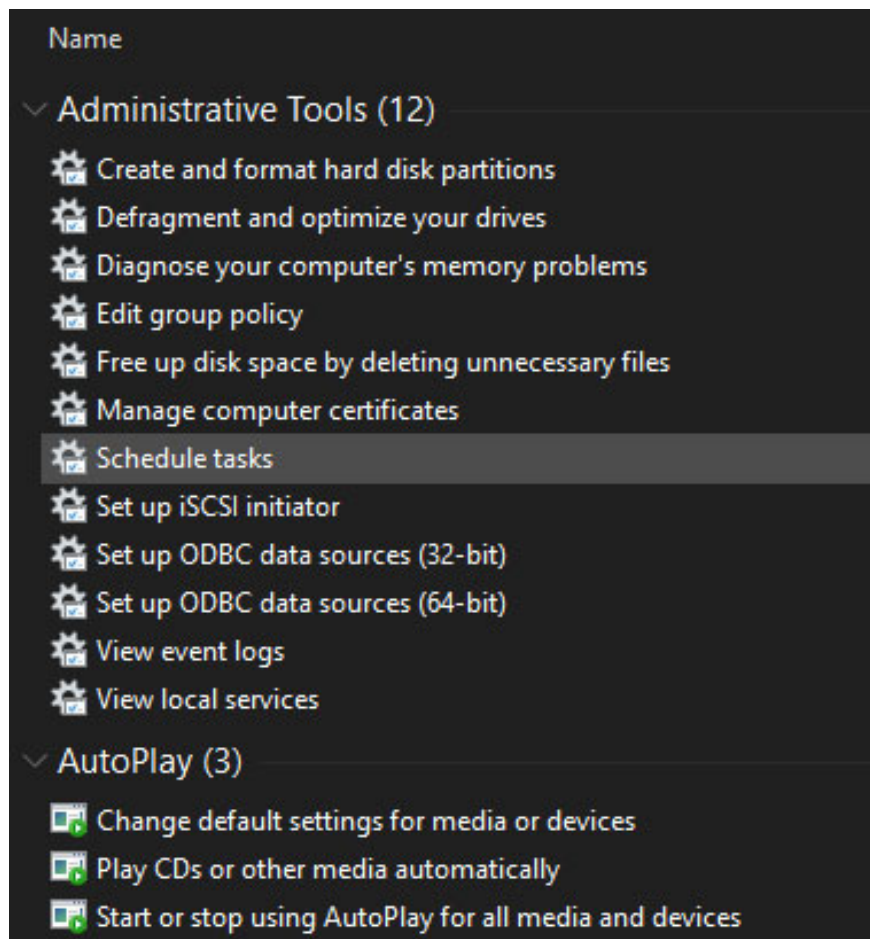
Did you know that Windows has many hidden modes, activating additional functions, helping you troubleshoot or improve performance for certain tasks? Some of these are hidden, while you may have heard of others, but have never tried them yourself.

Let's take a look at some of the hidden modes in Windows, including what they bring and how to access them.

Do you know about hidden modes in this Windows?

1. God Mode
2. Safe Mode
3. Game Mode
4. Battery Saver Mode
5. Dark Mode
6. Compatibility Mode
7. Airplane Mode
8. Tablet Mode
9. Focus Mode
10. S Mode

1. God Mode



God Mode is not really a mode but rather a collection of shortcuts. It groups Control Panel options together, as well as a number of inaccessible commands in Control Panel, into a list.

God Mode is easy to set up. Just right-click on the screen (or anywhere else you like) and select **New> Folder** . When prompted for a name, enter this name:

GodMode. {ED7BA470-8E54-465E-825C-99712043E01C}

If you want, you can change the text of GodMode to another name. When you press **Enter** to save the name, the folder icon will change to the Control Panel icon.

While you may not need to use it all the time, it's great that lots of commands are available in one place.

2. Safe Mode

You may have heard about Safe Mode if you had to fix any problems on Windows. This mode loads Windows only with the drivers and programs it needs to boot, without anything else. That way, you can eliminate third-party drivers or misconfiguration settings that cause problems.

3. Game Mode

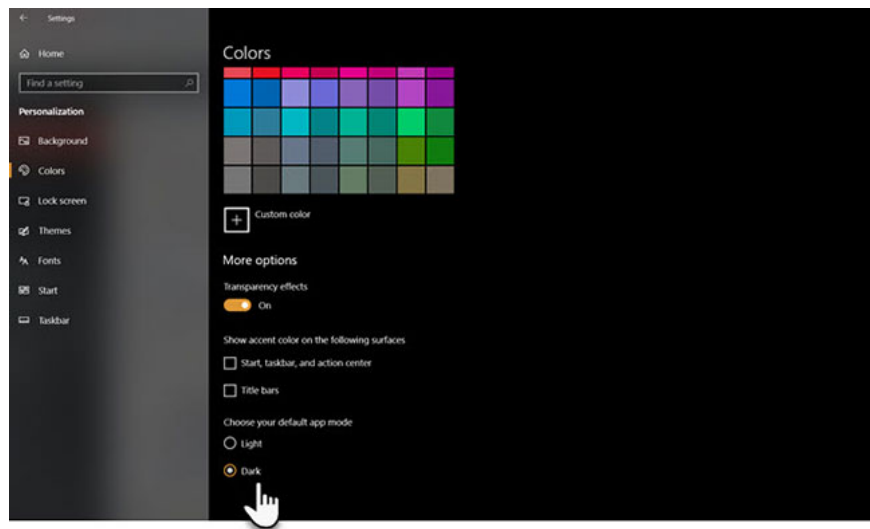
Windows 10 has more gaming features than any previous version. In fact, there's a control panel in the **Settings** app specifically for gaming features. One of them is Game Mode, which helps optimize the system for better performance in games.

4. Battery Saver Mode

If you own a laptop, you probably have the feeling of worrying about running out of battery at a critical time. To help prevent such situations, Windows 10 has a mode designed to save battery power.

This mode disables battery-draining tasks, such as synchronizing email and refreshing background apps. This feature also reduces brightness (this is an important way to save battery).

5. Dark Mode



Most current operating systems have Dark Mode and Windows 10 is no exception. Activating Dark Mode makes most of the default Store apps dark, as well as Windows elements like the **Settings** and **File Explorer** apps .

6. Compatibility Mode

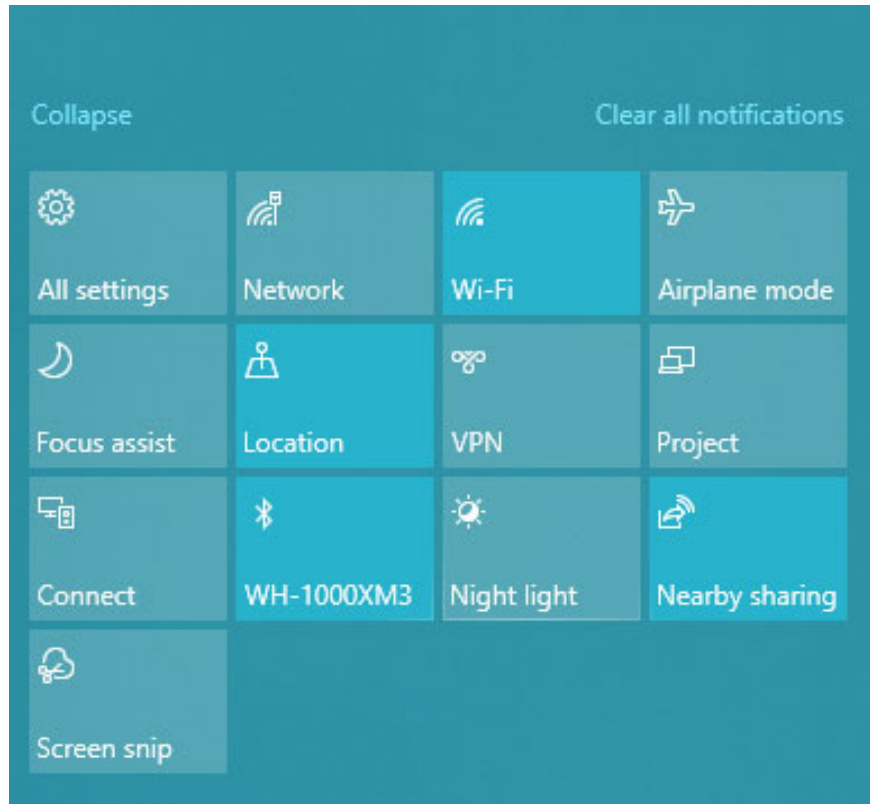
Windows often has good backward compatibility, but older software, especially programs that have never been updated for modern versions of Windows, may not work properly. That's why this operating system includes Compatibility Mode, which can help older programs run on current versions of Windows, even if they're not officially supported.

This mode has been around for a while, including in Windows 10. To use Compatibility Mode, you'll need to right-click the program's executable file and select **Properties**. From there, go to the **Compatibility** tab and you can run it in a mode designed for older versions of Windows. This section also allows you to switch other compatible options, such as forcing to switch to low resolution.

7. Airplane Mode

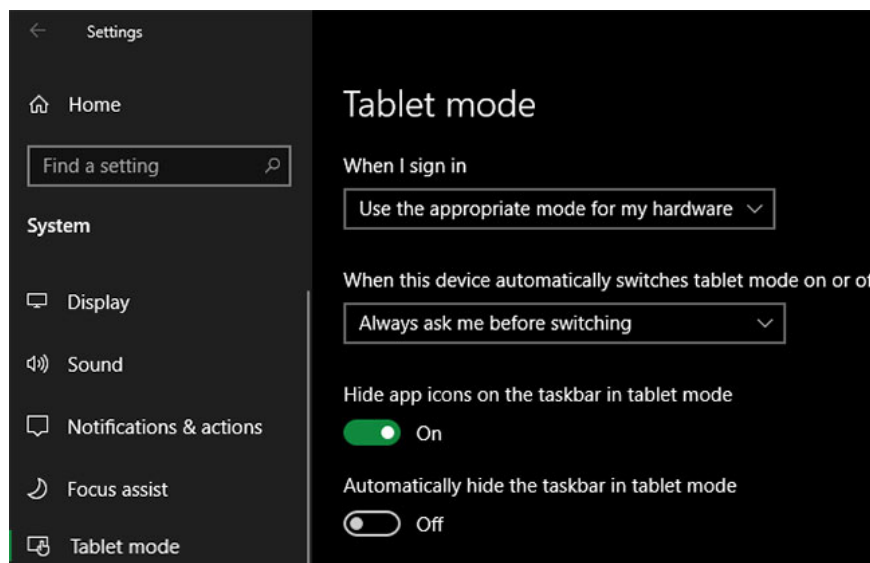
Another simple yet useful mode, Airplane Mode, works just like on a smartphone. Enabling this mode disables all wireless communication features, so the computer will not be able to use WiFi, Bluetooth, mobile data, etc.

In addition to being useful on an airplane, this mode can also serve as a battery saving option.



8. Tablet Mode

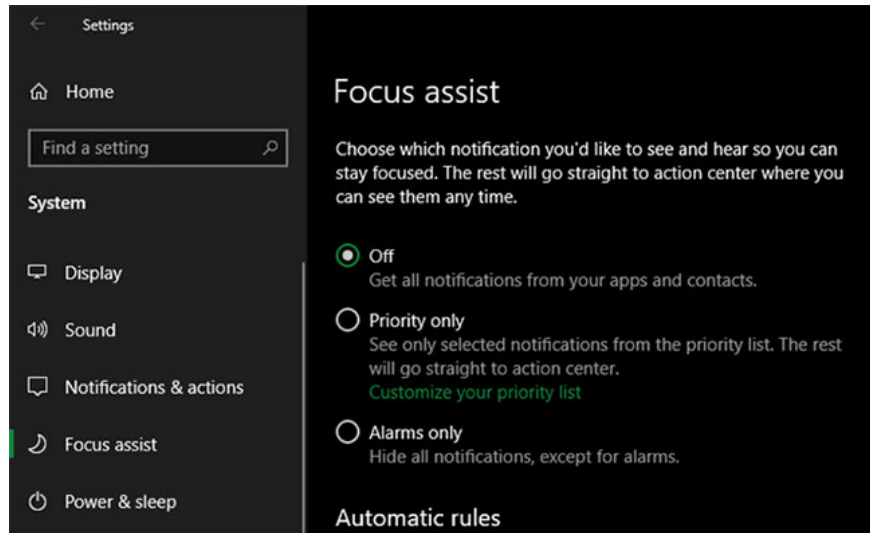
If you use Windows 10 on a tablet or laptop, you should know about Tablet Mode. This mode makes the interface easier to use on touch screen devices, when no mouse and keyboard are connected.



9. Focus Mode

Although this feature is called **Focus assist** and not **Focus Mode** , the article still includes it in this list, because it works like a special mode. Focus Mode allows you to block notifications to avoid distractions while working.

To configure Focus Mode, go to **Settings> System> Focus assist** . There, you can choose one of the options **Off**, **Priority only** or **Alarms only** . Click **Customize your priority list** to select the content displayed in that mode.



10. S Mode

This is a mode you may not want to use, but have probably encountered. Some Windows machines come with Windows 10 in S Mode, which is more limited than standard Windows installation.

S Mode only allows installing applications from the Microsoft Store and prevents you from using all browsers except Microsoft Edge.

Because S Mode is very limited, you probably do not want to use it. If you accidentally bought a PC that came with S Mode, it's easy to solve this problem.

Go to **Settings> Update & Security> Activation** . Click the **Go to the Store link** in the **Switch to Windows 10 Home / Pro section** .

This will open a Microsoft Store page titled **Switch out of S mode** . Click **Get** and confirm your selection to leave S Mode. This is a one-way process, so you cannot return to S mode later.

You finished reading the article "**10 hidden modes in Windows and how to use them**" edited by the [TipsMake](#) team. We hope this article has provided you with many useful tech tips and tricks. You can search for similar articles on tips and guides. Thank you for reading and for following us regularly.